

The Village of Port Alice  
RUMBLE SHEET

[www.portalice.ca](http://www.portalice.ca)

# ***IT'S RUMBLEFEST TIME!!***

***Saturday, June 11th & Sunday June 12th!***  
**Salmon BBQ Saturday @ 5pm**  
**Only \$9 a plate! Tickets available at the Dinner!**

The 17th annual Rumblefest Downhill and XC races promise to be another exciting Island Cup Weekend in Port Alice! The entire weekend is a great time for all ages with two challenging races, a kid's race, trials riding, and the annual Salmon BBQ. Successfully hosting an event of this caliber demonstrates how community, business, athletics, and environment can work together in harmony. The weekend also helps to highlight all that the North Island has to offer for outdoor enthusiasts!

Rumblefest is hosted by the North Island Trail Riders Org (NITRO), the Village of Port Alice, the Rumblefest Committee, and a huge number of volunteers. Affiliated with the Island Cup Series, Rumblefest is part of a circuit of races that span from Victoria to Port Alice.

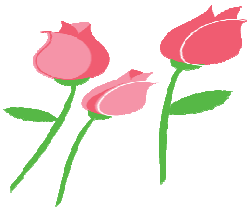
**Come be part of the action - we are looking for volunteers for the cross-country race Saturday & the downhill race Sunday.**

**We still need Volunteers to help with trail work, at check points, in the kitchen, at registration, and lots of First Aid! If you would like to be a part of this exciting weekend please contact Tanya at the Village Office (250) 284-3391 or email [pacc@cablerocket.com](mailto:pacc@cablerocket.com).**



## Roses & Thorns

Roses - to those that have done a beautiful job on the gardens around town!



## Councillor Lloyd's Column

(The views expressed within this article are the personal opinions of Councillor Bruce Lloyd)

I would first acknowledge the sad passing of our fellow resident and friend Bob Pickett—a colourful character if there ever was one. I miss seeing him and the dogs out early every morning. As well, I would acknowledge Scott Sinclair and family leaving for the “dark side” over in Port McNeill after many years of faithful all hours service operating our tire shop. Good Luck. Regarding the various claims of a local letter writer this spring, I would have to differ with much but not all that is written. Unfortunately, some of it is misleading. There seems to be the mistaken impression by many that we had further borrowed another \$600,000 on top of the successful referendum monies to complete the Community Center renovations. As well, the misunderstanding of the necessary running of the landslide costs through our books which led to the erroneous criticism that public works had seen bloated spending. This was in fact necessary extraordinary spending of which much will be refunded through emergency program reimbursements in the future. I would like to clear up some other mistakes as well. The commentary on the water system is accurate in the sense that it would be good to have the aged wooden stave water tank back in service. However, it is not a case of us having been unable to find out how the slight presence of E-Coli originated in that unit. As expected it was a small pin-hole on the roof of the wooden tank through which bird feces residue must have entered. We have left it off-line since the event after unsuccessful attempts at super-chlorination and the like. Specialists looked at it to determine how to approach the problem. A liner has been ruled out and we have been made aware that it is in far less than prime condition. Residents will recall that the other steel tank was installed in recent years and is in good shape. The Village is hesitant to hook up a suspect tank and throw our water out of compliance again. However work was scheduled to be underway this spring in hopes of resurrecting the wooden tank soon. Some equipment arrived, but without the pump unfortunately. I would remind the reader that the safety parameters are immense in lab testing and that we shut down any water system long before harmful levels are found per provincial regulation. This is the standard with our precious water. Regarding the claim that we could be caught short of “fire - suppression” water with respect to fire protection; our worst fires have only drawn down the tank by a meter or two each time according to our Public Works Foreman who checks as a matter of course in such matters. The marina concept has been a polarizing issue seemingly from the get go. I have always been somewhat ambivalent about the marina as some may know. However, we must respect the will of the voters who passed it in a successful referendum. Since it was held up due to lack of funding by the select North of Nanaimo mayors who sit on the regional funding board as appointed by the Liberals - it can become a campaign issue in the next municipal election as it should be in any democratic system. It is for this reason that once again I am puzzled by a call of one citizen to immediately jettison the project based on written demands which fly in the face of how we must democratically operate. If this is an important campaign issue as I think it surely is, then presumably the voter will choose the candidates which will either cancel or continue to pursue the marina project. By the way, this successful referendum is legally binding under the Local Government Act contrary to another false claim of the letter writer. Unlike the opinion question on the arena, bylaw 542 is a borrowing bylaw which has a term of 5 years. However, the project is not exactly on the verge of tender to be sure. This project has been budgeted in this same manner since the approved referendum in 2007 as per standard accounting practices. We will be able to inform the public of the particulars at the regular June 22nd council meeting at the Community Centre. I will deal with the letter writer's transit vote errors etc. in my next column. **Have a good summer.**



## Village Council Meetings

June Council Meetings will be held June 8<sup>th</sup> and June 22<sup>nd</sup>. The June 8th meeting will be held at the Village Office at 7:00pm. The June 22nd meeting will be held at the Community Centre Gym at 7pm. If you have questions, there is a ‘question period’ at the end of each meeting, for this purpose. If you have an item you wish Council to address, and would like ‘delegate status’, please submit a letter on or before the Friday before a meeting is to be held.

### Mayor:

Gail Neely 284-3927

### Councillors:

Ardie Bazinet 284-3562  
 Bruce Lloyd 284-3365  
 Dawn Martynyk 284-0076  
 Don Vye 284-6207

### Important Local Phone Numbers

**ANY EMERGENCY 911**  
 RCMP-non emergency

284-3353  
 Doctors Clinic 284-3555  
 Health Centre 284-3555  
 School 284-3315  
 Municipal Office 284-3391  
 Community Cnt 284-3912  
 Arena 284-3943  
 Public Works 284-6612

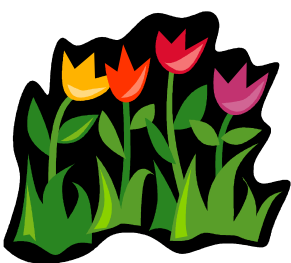
BC Road Conditions  
 1-800-661-2324  
 Wildlife 1-877-952-7277  
 (If you see a cougar/bear also call RCMP)

## Just a reminder to Mark your Calendar

July 30th and 31st for the Annual Don MacLeod Memorial Golf Tournament!

Friends Food Fun & Prizes!

**For info:**  
 Call Janice MacLeod  
 @ 250 284-6613



## **Community Notice for Port Alice**

Neucel Specialty Cellulose is having a large Mill Shutdown to do Major Capital Work on our Boilers for approximately 30 days from mid July to Mid August.

This shutdown involves many Contractors whom will all need Accommodations of some sort. Neucel and the major contractors have already booked many rooms at Hotels, Motels, Campgrounds and other known Apartments and Condo's in Port Alice, Port Hardy, and Port McNeal areas.

We will most likely need more accommodations in all three areas if you have suites, houses, apartments or rooms available that are suitable for rent please send an e-mail to Mr. Bill Mills at Neucel Specialty Cellulose – [bmills@neucel.com](mailto:bmills@neucel.com)

### **Information Needed:**

Cost – Weekly/Monthly  
Meals – Yes or No  
Laundry – Yes or No  
Housekeeping Service – Yes or No  
We will then forward the information to the Individual Contractors for booking.

Thank-you  
Dave Disney  
Project Manager

## **VILLAGE OF PORT ALICE PUBLIC NOTICE**

### **2011 Annual Municipal Report**

As required under Section 98 of the Community Charter, The Village of Port Alice Council will be accepting the Annual Municipal Report at the Regular Council Meeting held on Wednesday, June 22, 2011 at 7:00 p.m. in the Community Centre Gym.

The following documents will be included in the Annual Report:

2010 Village of Port Alice Audited Financial Statements

Statement of Councillors Remuneration and Expenses for 2010

Consolidated Statement of Goods and Services Purchased in 2010

Statement of Declarations of Disqualification for 2010

Statement of Major Tax Payers in 2010

Statement of 2010 Permissive Exemptions and the Bylaws exempting these properties from taxation

2010 Statement of Municipal Services & Operations

2011 Statement of Objectives & Measures

Please be advised that the 2011 Annual Municipal Report will be available for public inspection starting on Wednesday, June 8<sup>th</sup> at the Municipal Office located at 1061 Marine Drive, Port Alice, BC.

Gail Lind, Chief Financial Officer  
Village of Port Alice

## **NOTICE TO RESIDENTS DISPOSING OF WOOD WASTE AT THE TRANSFER STATION**

**THE WOOD WASTE PILE AT THE TRANSFER STATION IS FOR WOOD WASTE ONLY.**

This includes trees, branches, shrubs, construction materials, furniture, etc.

**METALS, PLASTICS, ROCKS & SOIL AND OTHER NON-WOOD PRODUCTS CANNOT BE INCLUDED WITH ANY WOOD WASTE.**

Residents are asked to remove any and all metals, such as drawer handles from furniture, hinges from doors, etc. The Village will be developing a policy to enforce this new requirement.

Port Alice is a fantastic recycling community, and we are sure residents will support this developing need. Thank you.

*Village of Port Alice*

# Seniors Dialouge

## Upcoming Events

### Games Night

7pm, Mondays at Sea View Activity Centre.  
Everyone is invited to this free night of cards,  
games and visiting!

## June's Outdoor Adventures

JUNE 24th, 10am

*Shephard's Garden Tour*

&

*Henshel's Fine Art Gallery*

**Cost: By donation to Gardens & Gallery**

Bring a bagged lunch for picnic lunch  
Please sign up by June 19. This is very important  
as we need to confirm rides and group numbers for  
the tour.



"Welcome, dear, to the Garden of Weedin'."

**ElderCollege is seeking volunteer instructors to incorporate into the curriculum for the upcoming year. Do you have special skills of knowledge that you would like to share with the community? Call Kathy 250 284-3215, Dorothy 250 284-6123, or Debbie 250 284-3437**

# ElderCollege

## Port Alice Elder College

ElderCollege is designed for students who are looking for a unique community of adult learners. There are no exams, no grades, and no pressure; **it's all about learning for fun!**

Visit Port Alice Village Office to Join!

**Step One:** Join ElderCollege at the Village Office, \$10.00 annual fee

**Step Two:** Register in a class - Call Colleen Wood (250) 949-2863

**Step Three:** Enjoy!

### Easy Stretching on a Chair

**When:** Monday June 6<sup>th</sup>, 9:30 am

Approximately 1 hour,

**Where:** Multi-Purpose room, Sea View Activity Centre (SeaVAC) Centre

**Who:** Instructor: Cheryl Reaume

**What:** Cheryl will guide students through some simple stretches using a kitchen chair as support. This is a great way to maintain flexibility for those with injury or mobility issues, or for those who want to be able to stretch just about anywhere.

There will be no floor activity in this class.

Open to both men and women.

Students are reminded to wear comfortable loose fitting clothing.

**Contact Colleen at  
250-949-2863 to register.**

# Community Centre News

**As Community Centre renovations continue please remember that...**

- **Open Gym and Yoga are taking place at the Sea View Gym (Little Gym)**
- **Mom's Morning Out will meet in the Curling Lounge, using the outside stairs**

We are excited to take this opportunity to showcase other great spaces in our Community  
- watch for a variety of activities offered in the coming months!

## **Open Gym - Please note changes!**

Each Open Gym a variety of activities in the Sea View School Gym, supervised by the Community Centre Supervisors. All ages are welcome!

### **Super Tot Open Gym - Thursdays 5:30-7:30pm**

Super Tots Gym is for 5yrs and Under to have the whole gym to themselves!

### **Open Gym - Fridays 6:00-8:00pm**

### **Softball - Wednesdays 6:00-7:30 on the School Field**

#### **12+ Floor Hockey!**

**In the Arena  
7-9pm**

Bring your sticks for a night  
of floor hockey!

Goalie Gear Provided



**Adults Welcome!**

## **SOFTBALL!**

**Ball season has begun!**

**All Ages Softball  
Wednesdays 6:00-7:30pm  
@ Sea View Ball Field**

**Bring your whole family  
for a fun night of softball.  
Bring your gloves and  
staff will bring the rest!**

**If you do not have a ball  
glove please let staff  
know and we can arrange  
to have one available**

## **SCHOOL'S OUT Party!**

**At the Sea View  
Activity Centre  
June 24, 6:00pm  
\$5.00 each or \$15.00 Family**

**Come celebrate Summer  
Holidays!  
BBQ Hot Dogs, Games,  
and loads of fun!**

**Invite your friends - and  
sign up at the Village Of-  
fice by June 22nd.**

# June 2011

Sun	Mon	Tue	Wed	Thu	Fri	Sat
			1 <b>Floor Hockey</b> - Arena 7-9pm <b>Softball</b> - School Field 6- 7:30pm <b>Yoga</b> 6:45-8pm	2  Super Tots Open Gym 5:30-7:30pm	3  <b>Open Gym</b> 6:00- 8:00pm	4
5	6 <b>Mom's Morning Out</b> 9:00-10:30am <b>Yoga</b> 6:45-8pm	7 <b>Drama</b> 3:15-4:00pm	8 <b>Floor Hockey</b> - Arena 7-9pm <b>Softball</b> - School Field 6- 7:30pm <b>Yoga</b> 6:45-8pm	9  Super Tots Open Gym 5:30-7:30pm	10  <b>Open Gym</b> 6:00- 8:00pm	11 <b>RUMBLE FEST 2011!!</b>
12 <b>RUMBLE FEST 2011!!</b>	13 <b>Mom's Morning Out</b> 9:00-10:30am <b>Yoga</b> 6:45-8pm	14 <b>Drama</b> 3:15-4:00pm	15 <b>Floor Hockey</b> - Arena 7-9pm <b>Softball</b> - School Field 6- 7:30pm <b>Yoga</b> 6:45-8pm	16  Super Tots Open Gym 5:30-7:30pm	17  <b>Open Gym</b> 6:00- 8:00pm	18
19	20 <b>Mom's Morning Out</b> 9:00-10:30am <b>Yoga</b> 6:45-8pm	21 <b>Drama</b> 3:15-4:00pm	22 <b>Floor Hockey</b> - Arena 7-9pm <b>Softball</b> - School Field 6- 7:30pm <b>Yoga</b> 6:45-8pm	23  Super Tots Open Gym 5:30-7:30pm	24 <b>SCHOOL'S OUT PARTY!</b> See Pg 5 for Details!	25
26	27 <b>Mom's Morning Out</b> 9:00-10:30am <b>Yoga</b> 6:45-8pm	28 <b>Drama</b> 3:15-4:00pm	29 <b>Floor Hockey</b> - Arena 7-9pm <b>Softball</b> - School Field 6- 7:30pm <b>Yoga</b> 6:45-8pm	30  Super Tots Open Gym 5:30-7:30pm		

# ACCESSING LINK RIVER CAMPGROUND

In the coming months, RDMW will be conducting some essential maintenance at Link River Regional Park that will necessitate further closures of the gate for security purposes. In addition, recent thefts of firewood and substantial investments in the infrastructure at Link River in 2010 mean that steps have to be taken to preserve public vehicle access while increasing off-season security at a location that is important for recreational tourism in the summer months.

After consultation with the Village of Port Alice, RDMW has implemented a new sign-out system for keys at both its own Port McNeill office and at the Village office. Members of the public who wish to access Link River can sign out a key at any time in exchange for a small returnable deposit and personal contact information. The keys must always be returned after use is complete and the park gate locked upon exit. These measures are not being taken to restrict public access, but to protect the investment of local taxpayers' money through the RDMW Parks service. It is our hope that this measure will satisfy all residents.



## Left Turn Into the Wrong Lane

I've noticed a new way to do left turns onto a busy four lane highway near my home. You stop at the stop sign on the side road, look both ways, then turn left, head on into the left turn lane on the highway. Once there, you check behind and move right into the fast lane if there is room. If not, you stop and wait until there is room to proceed.

This does make life exciting if there is oncoming traffic wanting to use their left turn lane but it helps avoid the highway traffic that rarely slows to the posted 60 km/h limit. I've often thought that selfish drivers on the highway can't see a reason to slow from 90 until they are trying to enter the highway from a side road here. The trouble is, they don't seem to remember that difficulty when the duty is to slow for other drivers. When the driver on the side road stops and yields to traffic on the highway close enough to be a hazard, the rules then allow them to proceed with caution. Traffic on the highway must now yield and let the driver enter. Never rely on right of way in this situation as it is unlikely that traffic on the highway will yield.

Don't make a practice of this new method of turning left. It's illegal! One must always make the turn to arrive in the first available lane to the right of the center line before you leave the intersection.

Constable Tim Schewe (retired)  
DriveSmartBC □ Traffic Safety in BC  
<http://www.drivesmartbc.ca>

# Cops Corner

Port Alice RCMP -

250-284-3353

Cpl Michelle LeBRUN

Cst Rory WEBB

## Community Health Information

### NOW HIRING

#### Make a difference, apply today The BC Ambulance Service needs YOU!

Take action and be a leader in your community. BCAS is currently recruiting across Vancouver Island for community members who want an opportunity to provide a vital service and make a positive difference to the lives of others.

For More information and to download an application package visit [www.bcas.ca](http://www.bcas.ca) and select Emergency Medical Responders from the careers page or contact us by phone at 1-877-577-2227, by fax at (250) 952-5970 or email us at [HLTH.BCASrecruitment@gov.bc.ca](mailto:HLTH.BCASrecruitment@gov.bc.ca).

Emergency Medical Responder training may be provide to those qualified.

*Send your applications to:*

**BC Ambulance Service**  
Human Resources - Vancouver Island  
PO Box 9601, Stn Prov Govt  
3300 Douglas Street  
Victoria, BC V8W 9P1

Questions or concerns? Call  
Chandra Hovde at 250 284-3590.

#### Port Alice Health Forum

Drivers are available and will volunteer their time if rides to Port McNeill or Port Hardy for **medical appointments** are needed. Reimbursement for expenses is appreciated.

**24 Hours advance notice is preferred, but in the case of unforeseen emergencies we will try to meet your needs.**

**If you need a ride to the local health clinic please give us a call.**

Travelling to Port Hardy or Port McNeill? If you are willing to offer a ride please let us know.

Contact 250 284-6109 or 250 284-3216

**We Need More Volunteer Drivers** – you must have a drivers abstract (available from any ICBC outlet) and be fully insured.

#### Do You Need a Ride?

**Cancer patients** needing rides to appointments call John Harris – the CSS Driver Coordinator in Port Hardy. Phone 250 949-7874.

**People needing rides for non-emergency medical appointments down island** call the **Wheels for Wellness Society**. This society offers free transportation to and from appointments. These rides are offered for distances exceeding 75 km only.

It is hoped to further expand this service in the future. Donations towards expenses are welcome but not required. Pick up for Port Alice is at the Beaver Lake Cut-off. For more info call Don Buchner at 250-338-0196

---

#### **Public Health Clinic**

*Please call 250-284-3555 for an appointment*  
Baby Clinics are 2:30-3:30pm

---

#### **Port Alice Health Centre**

Located at 1090 Marine Drive is open 7 days a week from 8:30 – 4:30. A nurse is on duty during these times

**250-284-3555**

---

#### **Mental Health Clinic**

Held weekly at the Port Alice Health Centre, by doctor of self-referral

**Contact 250 902-6051 to set up an appointment time.**

---

#### **Infant Development Program**

**When your baby needs extra help**

Phone 250-949-8333 (**Ask for IDP**)

Email [reception@nicccs.org](mailto:reception@nicccs.org)

**Employee & Family Assistance Pro./Assess. & Resource Service.** Our services are here to support you. If you need us do not hesitate to call

---

#### **North Island Counseling Services**

Mental Health & Alcohol/Drug  
Email: [mentalh@island.net](mailto:mentalh@island.net)  
250 949-8611

NI Assessment & Referral  
Email: [hopeful@island.net](mailto:hopeful@island.net)  
250 949-3144

NI Community Services  
Email: [nicsbc@telus.net](mailto:nicsbc@telus.net)  
250 956-3134

NI Crisis & Counselling  
Email: [reception@nicccs.org](mailto:reception@nicccs.org)  
Crisis Line: 250 949-6033  
250 949-8333



# **SEVEN HILLS**

## **LADIES GOLF TOURNAMENT.**

**SATURDAY JULY 16, 2011.**

**SHOTGUN START AT 8:30 A.M.**

LIGHT BREAKFAST AT 7:30 A.M.

LUNCH AND PRIZES TO FOLLOW GOLF.

1ST AND 2ND LOW GROSS PRIZES

1ST AND 2ND LOW NET PRIZES

OTHER PRIZES WILL BE BY RANDOM DRAW FOR ALL PLAYERS.

**ALL LEVELS OF LADY GOLFERS ARE WELCOME.**

**HANDICAPS ARE NOT REQUIRED.**

**COST FOR GOLF, LUNCH AND PRIZES - \$45.00**

**ENTRY DEADLINE IS JULY 8, 2011**

**REGISTER AT THE PRO SHOP @ 250 949-9818**

**OR CONTACT**

**MAGGIE FLOSTRAND @ 259 284-3591**

## “Bear Smart” Myths

**Myth:** Reporting a bear sighting means the bear will be destroyed.

**Truth:** By reporting a bear sighting in your community to **1-877-952-RAPP (7277)**, you assist the local Conservation Officers and the local Bear Smart Committee with very important information to proactively manage bears in your neighbourhood. The location of the bear and the bear’s concurrent behaviour help to determine the level of potential conflict with regard to human safety. This important course of action on your part will initiate a concentrated public outreach campaign in the neighbourhood encouraging the removal of all attractants and may initiate non-lethal management strategies to help the bear create a healthy respect and fear of humans. Yes, every year bears are destroyed due to human-bear conflicts, but as a last measure and always preventable.

**Myth:** A bungee cord to hold down the lid of a garbage can makes it bear proof.

**Truth:** “...if it can be dismantled using a crowbar then it is not bear proof.” - [www.bearsmart.com](http://www.bearsmart.com) Bears are incredibly strong and persistent, a bungee cord is no match for a black bear. Store your garbage cans securely in your garage, workshop, or other bear-proof enclosure until garbage pick up day and then place the cans curb side as close to pick up time as possible. For tried and tested bear proof curb side solutions visit [www.bearsaver.com](http://www.bearsaver.com), [www.unbearablebins.com](http://www.unbearablebins.com), [www.bearbins.com](http://www.bearbins.com) and "Schaeffer Bins" by Rollins Machinery to view various polycarts that are relatively inexpensive, easily moved and come in different sizes.

**Myth:** All bears that come into our community are “problem” bears.

**Truth:** “Problem” bears are made not born. Conditioning to non-natural food sources brings bears into frequent contact with humans and results in a higher chance of human-bear conflicts. Preventative measures such as thoroughly burning off the BBQ grill after each use, removing bird feeders from your property, properly storing garbage in a bear-proof facility or enclosure until pick up day and keeping pet food/dishes indoors will encourage a peaceful co-existence between black bears and humans.

**To report any wildlife-human interactions where public safety may be at risk, call the Conservation Officer Service at 1-877-952-RAPP (7277)**

Information provided by Christina Brack, Director of Communications Bear Smart BC Society and Crystal McMillan, Executive Director Bear Smart BC Society

For more “Bear Smart” information, contact: Christina Brack 250-723-9200 or Crystal McMillan at 250-951-9453

To reach the **AFTER HOURS DOCTOR** on call press 1. This will take you to the **PORT MCNEILL NURSING STATION** who will then call the on call doctor.

To reach the **NURSING STATION, PRESS 2**

To reach the **DOCTOR’S CLINIC/FRONT OFFICE, PRESS 3**

### Attention Senior Residents, or people in our Community needing help

Many people in our community are willing to help seniors or people with disabilities with assorted tasks and services. A list of service providers is now available and can be picked up at;

**The Library; The Legion; The Senior’s Activity Centre; The Port Alice Health Centre**

Contact me if you would like one delivered to your home.

Thank you to all the people who are willing to help and to those who assisted me to get this project going.

For further information or if you have any questions please call me,  
Maggie Flostrand - phone 250 284-3591

# Community News and Advertising



**F.P. Foods Ltd.**  
**284-3525**

Full Service Supermarket  
 Fresh Meat Department – Produce  
 Department – In Store Bakery

Deli – featuring Quality Sliced Meats & Cheeses,  
 Take-out Chicken, Soft Ice Cream, “Super Subs”

Sporting Goods

Mon to Fri 10:00am-7:00pm Sat 10am- 6pm  
 Sun 11am- 5:30pm

**Port Alice Thrift Shop**  
 Tues, Thurs & Sat  
 10:00 am – 2:00 pm

Located at Sea View Activity Centre.  
 (Parking Lot off Centennial Field Rd)

**Please ensure that items being dropped off  
 are clean and in good condition**

*Thank you for your donations*



**Port Alice Branch open**  
 Tuesday, Wednesday, Thursday  
 2-4pm & 7-9pm  
 (250) 284-3554


**Ocean View Christian**  
**Assembly**  
 Services every Sunday  
 10:30am & 7:00pm  
 (250) 284-3522

**Hats Off for Cancer**  
 We take in clean and/or new hats at the Clark’s year  
 round - 974 Haida.

We have now taken 4000 hats to 1st Choice Fitness  
 in Port Hardy. Thank you for making children with  
 Cancer smile at camp.

**Action Roofing**  
 Courtney Philipow  
 Owner

93 McKay  
 Port Alice BC  
 T: (250) 284-6639  
 C: (250) 527-0013



**Maple Ridge Chrysler Jeep Dodge**  
 Jordan Allen  
 Sales & Leasing Associate

Cell: 604-992-6221  
 Fax: 604-465-6259  
 Email: [sales@mapleridgechrysler.com](mailto:sales@mapleridgechrysler.com)  
 Local or Toll Free:  
 1-877-465-8931

**Carpentry & Renovation  
 Services**

Call:  
 Kjell Kristiansen  
 Lore Kristiansen  
 284-3956

## Community News and Advertising Cont.....

### QUATSINO CHALET IS HIRING...

#### Full Time Kitchen Helper

Job Location :

Quatsino Chalet Restaurant  
111 Nigei St. Port Alice, BC

Wage: \$9.00/hour, paid semi-monthly

Shift : 11AM-3PM, 5PM-9PM

Job Duties :

- Wash and cut vegetables and foodstuff;
- Clean kitchen and store supplies;
- Prepare ingredients for cooking as instructed by the cook;
- Prepare, cook and finish simple food items;
- Perform other duties to assist the cook;

Perform simple cooking under supervision of the cook  
Board and Lodging provided

Job Nature: Permanent

Requirement: 1 or 2 years of kitchen experience

Please send resume to [ericashshum@gmail.com](mailto:ericashshum@gmail.com) or contact  
Erica 250 284 3338 for more info

#### Full Time Cook in Chinese & Canadian Cuisine

Job Location :

Quatsino Chalet Restaurant  
111 Nigei St. Port Alice, BC

Wage: \$14.00/ hour , paid semi-monthly

Shift: 11AM – 3 PM, 5PM – 9PM

Job Duties:

- Prepare and cook complete meals or individual dishes and foods in both Canadian and Chinese cuisine;

- Plan menus,

- Monitor and order food supplies

- Work with specialized cooking equipment such as deep fryers and wok;

- Manage kitchen operations;

- Train staff in preparation, cooking and handling of food;

Supervise kitchen staff and helper

Board and lodging provided

Job Nature: Permanent

Requirement: 1 or 2 years of cook experience

**If you get sick, you get paid.  
If you don't get sick, you get paid back.**

#### Why Life's brighter with Sun Critical Illness Insurance

- Helps pay your mortgage and other regular expenses while you take the time you need to recover.
- More control over treatment options and ongoing care, including access to services to help you through the medical maze.
- Serious illnesses do happen – but your premiums can be returned if you don't make a claim.

Today is a good day to learn more, so let's talk.

**Doug Brown**

Tel 250-956-2544

Cell 250-902-9294

Fax 250-956-4014

[doug.brown@sunlife.com](mailto:doug.brown@sunlife.com)

[www.sunlife.ca/doug.brown](http://www.sunlife.ca/doug.brown)

#7B-1705 Campbell Way, Port McNeill BC V0N 2R0



© Sun Life Assurance Company of Canada, 2011.



## Bruce's Sunrise Contractors

**-Certified Journeyman  
Carpenter-**

**Decks \* Renovations \* Roofs  
Windows \* Repairs \* Flooring**

**B. Witzel 250 209-2678**



## Community News and Advertising Cont.....

### ***Rumble Beach Falling***

For all your tree removal needs,  
pruning, topping, limbing, Residential or  
Business

Certified Faller – 25 years  
Experience

On call for Village of Port Alice  
**Regan Hickling**  
**250 284-6204**

### ***Rumble Beach Fishing Charters & Sightseeing Tours***

Regan Hickling –  
30 years  
experience in local  
waters  
**250 284-6204**  
**250 209-2779**

### ***Castaway Marine Charters Fishing & Sightseeing***

Larry Pepper  
Fishing the  
Quatsino Sound  
since 1978

**250 284-3572**

## **PORT ALICE AVON**

Call Deb Egan  
(new rep)

**250 284-3970**

### **Little Miss Sew & Sew**

**For all your  
sewing needs!**

**Call  
250 284-6643**

### **PORT ALICE PETROLEUM PRODUCTS**

**For all of your fuel and fishing  
tackle needs. We deliver marine  
fuel by appointment.  
Please call 250 284-3530**

Mon-Sat 8am-6pm  
Closed Sun & Holidays

- Gas
- Diesel
- Marked Midgrade
- Propane
- Fishing Tackle & Bait
- Confectionary
- Local Artisans
- Souvenirs

### **Claire Trevena, MLA (North Island)**

7215 Market Street  
(Box 819)  
Port Hardy, V0N 2P0  
Phone: 250 902-0325 or 866  
387-5100  
Fax: 250 902-0375  
Hours: Wed. & Thurs., Noon  
to 4 PM  
Email:  
[claire.trevena.mla@leg.bc.ca](mailto:claire.trevena.mla@leg.bc.ca)  
[www.clairetrevena.ca](http://www.clairetrevena.ca)

*Hannelore  
Kristiansen*



*Commissioning  
Portraits  
Landscapes  
Seascapes  
250 284-3956*

## Community News and Advertising Cont.....



Mini Excavator w/operator and dumping 5 ton trailer.

Serving Port Alice, Port Hardy, Port McNeill and surrounding areas.

Low impact travel on grass or roadways due to its rubber tracks.

Undercarriage retracts to just under 39" to fit through most garden gates and access hard to get at jobs.

Available for:

Trenching - Foundation inspection - Drain Tile replacement and foundation coating - Prep Grading and Concrete work - rock and stone placement - Trail building & Maintenance - Stump removal - Footings - Septic tanks and field installations.

Anything you don't want to shovel by hand

Aaron Neely

PH 250 209-6318

[Triport.contracting@yahoo.ca](mailto:Triport.contracting@yahoo.ca)

### Marble River Salmon Enhancement Society

Volunteers are welcome to join us. Call Lyle or Maggie at 250-284-3591 for more information.

#### FUNDRAISER - FOR SALE

**Wooden Planters** – eight sided, Stainless steel screws and banding, Preservative treated – 16" high and 16" wide

Will last over 10 years!

Price - \$40.00 each

Call Lyle or Maggie at 250 284-3591

## COLYVAN PACIFIC

**REAL ESTATE MANAGEMENT SERVICES LTD.**

**#202-5704 BALSAM ST  
VANCOUVER, BC V6M 4B9**

Catch the Wave  
Business is Great!!

### Port Alice Shopping Centre

We have a number of units of various sizes for lease. We're open for discussion

**Contact:** Colyvan Pacific  
**Ray Seymour**

Ph 250 740-1229

Toll Free 1-877-859-2225

[rseymour@colyvanpacific.com](mailto:rseymour@colyvanpacific.com)

Fax 604 683-7399

### Ocean View Restaurant (at Ozzieland)

Enjoy daily homemade soup and sandwich specials.

Hours

**Monday-Saturday**  
11-2:30 pm & 4:30-7 pm

**Eat in or Take out**  
**250 284-3422**

**Port Alice RV Park  
Boat & Trailer Storage**  
\$150 Month  
\$10 Day  
250 284-3422

### Ocean Myst Massage

Have table will travel right to your home!

Comes to Port Alice 2 times a month

**Call**  
**250 230-0846**

## Community News and Advertising Cont.....

### Port Alice Lions Club

We are a non-profit organization which helps out our community and all those that live here. Are you looking for something to do during the winter? Would you like to help out your community? We are always looking for new members to join our team. For further information please call Audie Tamburini at 284-6663 or Teresa Cliff at 250 284-6630. Please think about it and give us a call.



### PORT ALICE RECYCLING SOCIETY

Monday to Friday 7:45 - 3:45pm

Tuesday 4 pm - 8 pm

Saturday 10 am - 2 pm

Sunday 2 pm - 6 pm

Please **do not put cardboard into the big blue bin** at the recycling yard.

There is a cardboard collection site at the right side of the yard.

**\*\*CARDBOARD MUST BE FLATTENED \*\*  
BEFORE PUTTING IT IN THE DEPOT  
COLLECTION SITE.  
IT WILL NOT BE PICKED UP UNLESS IT IS  
FLATTENED**

***Regional District/Seven Mile charges an additional fee for cardboard in the garbage. Please help Port Alice keep the costs of garbage disposal down to a minimum.***

***New! If you are a shut-in or a senior without a vehicle, you can phone Cathy at 250 284-3215 to arrange to have your recycling picked up.***

**Now accepting #1 to 7 plastics, including plastic bags showing the recycling symbol.**

### Battery Recycling:

- ⇒ The Depot is now accepting **both Alkaline and Rechargeable Batteries** for recycling.
- ⇒ Rechargeable batteries eligible for collection and recycling are: Nickel Cadmium (Ni-Cd), Lithium Ion (Li-ion), Nickel Metal Hydride (Ni-MH) and Small Sealed Lead (Pb).
- ⇒ Small dry cell portable rechargeable batteries are commonly found in cordless power tools, cellular and cordless phones, laptop computers, camcorders, two-way radios and remote control toys. Please help keep the outside depot clean and rodent free. Rinse your milk jugs, plastics and tins and remove any caps.

**NO GLASS please**

---

### PORT ALICE LIONS CLUB USED EYE GLASSES AND HEARING AIDS RECYCLE FOR SIGHT AND HEARING PROGRAM

The Port Alice Lions Club is collecting used eye glasses – lenses, frames, or both, and used hearing aids. These are refurbished and sent to third world countries for distribution, by opticians, to people in need who are unable to afford to buy these items.

Collection boxes are located in the Village Office and FP Foods. For further information, contact Audie Tamburini at 250 284-6663

Thank You.

**Your unwanted glasses and hearing aids will help someone to see and hear better.**

---

### Port Alice Fish & Wildlife Association

Are you interested in outdoor recreation and conservation? Consider membership in Port Alice Fish & Wildlife Federation. Fee of \$30 includes membership to BC Wildlife Federation which is a province wide volunteer conservation organization representing all British Columbians whose aim is to protect, enhance, and promote wise use of the environment for the benefit of present and future generations. The Federation is BC's largest and oldest conservation organization. Check out

[www.bcwf.bc.ca](http://www.bcwf.bc.ca) Contact Jamie 250 284-3420

## ROYAL CANADIAN LEGION, BRANCH 180

**HOURS** Monday to Friday 3 pm – closing time, Saturday & Sunday 1 pm – closing time. Off-sales close at 11:00 pm. Hours will change accordingly for special events or functions. Planning a party or function? Our facilities are available. If you are planning a party or a function the Legion will supply a DD for you. Please call 250 284-3256.

### Our lottery games have expanded - we have it all now!

649, BC49, Keno, Pacific Poker, all the sports action, 50/50. Come to the Legion and try your luck!

**Monthly Meeting** – Sunday June 19th, 2:00 Executive, 2:30pm General meeting.

We support the community with bursaries, assistance to the sick and elderly, or those in need, and donations to various events and organizations in town.

### The Royal Canadian Legion Branch 180 Ladies Auxiliary

Monthly General meeting dates have changed to the 3rd Sunday of the month starting at 12:30 pm at the branch. The executive will meet prior to that meeting to compose the agenda. Organizations requesting funding or assistance should have those letters arrive before the meeting dates.

Thank you for your support.

### ROYAL CANADIAN LEGION BRANCH #180

#### Executive for 2011

President	Patsy Bailey	284-6204
Vice President	Richard W. Beckett	284-6179
		Fax 284-6686
Secretary	Cathy Beckett	284-6179
		Fax 284-6686
Treasurer	Colin Sutherland	No Phone
Service Officer	Bev Johnson	284-6657
Executive	Paul Tregoning	284-3424
	Pete Mason	284-3560
	Colin Sutherland	284-0155
Sgt At Arms	Richard W. Beckett	284-6179
Membership & Ways and Means	Audrey Clark	284-3261

### “We Support our Troops”

The Legion is taking orders for items that say “We Support our Troops”

Red or Navy T-shirts - \$12.95

Ribbon Shaped Pins - \$1.95

Bumper Stickers - \$3.95

The catalogue and order form book is at the Legion.



## CLASSIFIED ADS

### For Sale

2 bedroom, 1<sup>1/2</sup> bathrooms, new floor, appliances and much more  
#40 Clark Drive  
\$106,000  
Call 250 949-6319 for more info

### Apartment for Rent

Misty Manor #301-791 Marine Dr.  
1 Bedroom Furnished  
\$575.00\month Call Ray 250 216-4851

### For Rent

3 Bedroom unfurnished Townhouse for rent.  
Call 250-428-9028

### Townhouses for Rent or sale

3 Bdrm, 1 1/2 Bath  
Contact Anne Anderson 1 780 968-5344

### For Sale

2 bedroom Apartment, Renovated, new paint and carpets, Oceanview, Seaview Apts (2<sup>nd</sup> floor)  
Call 250 949-9893  
Asking \$59,000

### Apartment for Rent

Semi-furnished 1 bed apartment in Misty Manor, Non-smoking, no pets, no parties. Lovely little place in nice building suitable for single or couple without children  
\$550 per month call Tony or Barb at 1250 624-3868  
email [priceajb@gmail.com](mailto:priceajb@gmail.com)

### Apartment for Rent

Forest Grove - 2 Bdrm, Oceanview, newly renovated.  
Available April 1st  
To view or for questions call Jane at 604 341-8496 or [jane@nukaria.com](mailto:jane@nukaria.com)

### Wanted - Paper Carriers

Starting in July \$20 per week. Friday Delivery.  
Phone Bruce @ 250 284-3365

### For Sale...112-801 Marine Drive

3 Bedroom Apt in excellent condition, new flooring, refinished cupboards, new paint, new textured ceiling, ground floor, beautiful view of the inlet from enlarged patio  
Reduced Price! \$84,900  
250 426-6486

### Ocean View Townhouse for Rent

Large ocean view end unit Townhouse  
Living Room with view deck  
3 Bedrooms, huge Master Bedroom.  
Large Family Room or 4<sup>th</sup> Bedroom  
With patio doors to front yard with view.  
Large Kitchen with patio doors to private deck.  
2 Bathrooms, Laundry Room with washer, dryer & storage.  
Double carport with 1 enclosed.  
Will furnish if required. Non-Smoking  
Call 250 284-3434 to view

### UNFURNISHED APARTMENT FOR RENT

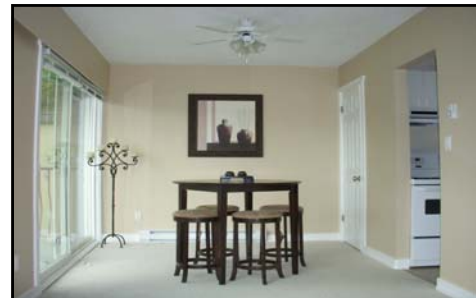
Available Immediately  
#305-1073 Maquinna Avenue  
Forest Grove Apartments

- Very Clean 2 Bdrm upstairs unit
- Carpeted living room with wood floor dining area
- Storage Locker and Carport
- Unrestricted sea views
- Very quiet building
- \$650 per month plus utilities

For more information or to arrange a viewing please call Jane Rukaria at 604 341-8496 or email: [jane@rukaria.com](mailto:jane@rukaria.com)

### Apartments for Rent in Port Hardy

Renting right on the waterfront in Port Hardy.  
Two bedroom suites from \$795.00 per month and 3bedroom townhouses from \$895.00 per month.  
All units are completely renovated. All new kitchens with dishwashers, all new bathroom fixtures.  
Too many features to mention.  
Units are also for sale, starting at \$99,000.00  
**Call Susan at 250 902-0540 to view.**



**1037 Matsqui Ave.****MLS: #262825 – Single Family****3 Bed / 2 Bath - 1,956 sq.ft.**

This property has some of the nicest plants in the gardens both front and back. Two bathrooms eat-in kitchen, plus dining room. This house is sound and will bring out the interior decorator in you! Take advantage of this well priced home! Backyard glass greenhouse and a work shed.

**\$186,900****Phone: 250 949-7231**[www.hardyrealty.ca](http://www.hardyrealty.ca)**103-801 Marine Dr****MLS #300703 - Condo****2 Bed / 1 Bath - 723 Sq. Ft.**

Inlet view. New Fixtures and Tiles! You must see this completely redone walk-out ground level suite, move in ready for your quiet get –away! Has new roof.

**\$66,900****Phone: 250 949-7231**[www.hardyrealty.ca](http://www.hardyrealty.ca)**303 - 801 Marine Drive****MLS: #304388 Condo****2 Bed / 1 Bath - 802 sq.ft.**

Ocean view front facing unit. This spacious condo comes complete with gorgeous furnishings. Included appliances; a self clean oven, convection microwave & built in upright freezer. Electrical upgraded to 100 amp service. You could call this beautiful condo home! So call today!

**\$75,900****Phone: 250 949-7231**[www.hardyrealty.ca](http://www.hardyrealty.ca)**1206 Matsqui Ave.****MLS# 306489****2 Br / 2 bath - room for more - 1944 sq. ft**

Roof replaced 2010 - Nice inlet views - Wrap around deck - Enclosed garage. Would make a wonderful family home! Corner Lot - Quiet area!

**\$209,000****Phone 250 949-7231**[www.hardyrealty.ca](http://www.hardyrealty.ca)**# 302-791 MARINE DRIVE****MISTY MANOR****MLS: #274439 - Condo****2 Bed / 1 Bath - 843 sq.ft.**

Building has new roof!

This beautiful, well maintained, updated unit has a nice view of the inlet, and mountains. Permanent living or that vacation hide-a-way “dream come true”, and even comes furnished!! Fishing, surfing, relaxing, hiking, boating, hunting, and the list goes on! A ladies home with white rugs & cream leather furniture.

**\$79,800****Call today @ 250 949-7231**[www.hardyrealty.ca](http://www.hardyrealty.ca)**# 305-791 Marine Drive****MISTY MANOR****MLS: #283945 - Condo****1 Bed / 1 Bath - 667 sq.ft.**

This is the ideal spot to call home! New roof installed, and the bathroom has and been re-done. Your mortgage payment will be way less than renting. **Act fast so you don't miss out!**

**\$47,000****Call now! @ 250 949-7231**[www.hardyrealty.ca](http://www.hardyrealty.ca)**800 Marine Drive****MLS: #239495 – Lot**

An absolutely beautiful oceanfront lot for that dream home! Neighbouring lots have very nice homes. Vacationers and retired people love the area for all it has to offer in the way of outdoor recreation! This lot is the only one available, so act fast! Vendor will consider all reasonable offers!

**OFFERS!****Phone: 250 949-7231**[www.hardyrealty.ca](http://www.hardyrealty.ca)**88 McKay Cres.****MLS: #268613 - Townhouse****3 Bed / 2 Bath - 1,800 sq.ft.**

Lovely updates throughout. New baths, furnace, flooring and countertops to name a few. Private little courtyard off dining area. Covered balcony off living room has a view across central park area. All the work is done, you can just move right in!

**\$125,000****Phone: 250 949-7231**[www.hardyrealty.ca](http://www.hardyrealty.ca)**1007 Maquinna****MLS#299193 - Townhouse****3 Bed / 1 Bath - 1452 Sq. Ft**

Nice, clean basic accommodation! Covered parking, Off-street driveway includes 4 existing appliances. Visible water view from patio. Owner says sell!

**\$94,000****Phone: 250 949-7231**[www.hardyrealty.ca](http://www.hardyrealty.ca)**104 Haida Ave.****MLS# 315143****3 Bed\2 Bath - 1500 Sq. Ft.**

Renovated unit ready to move in. New siding plus interior upgrades. Living Room with balcony, rec room with patio.

**Sacrifice Price \$99,900****Phone: 250 949-7231**[www.hardyrealty.ca](http://www.hardyrealty.ca)

**76 McKay Cres**  
**MLS#303245**  
**3 Bed / 2 Bath - 1800Sq. Ft**

This is a gorgeous end unit next to the trees with a view of the inlet! Completely updated and move in ready! Comes Beautifully furnished!

**\$149,900**  
 Phone: 250 949-7231 [www.hardyrealty.ca](http://www.hardyrealty.ca)

**94 McKay Cres.**  
**MLS #291580 - Townhouse**

3 Bed / 1 1/2 Bath - 1680 sq. ft.  
 A beautifully updated tri-level end unit with a very nice fenced garden and even a glimpse of the inlet. Extra large deck of living room gives you another space to sun or entertain. Entire lower floor hobby / study area. View it soon!

**\$152,900**  
 Phone @ 250 949-7231 [www.hardyrealty.ca](http://www.hardyrealty.ca)

**#22 - Dogwood Lane - SOLD**  
**3 bdrm, 2 bath townhouse / Oceanviews**  
 Lovely decorator colors & many upgrades included Vinyl Windows. All appliances included in sale  
 Low strata fees and loads of space!

**\$109,900**  
 Phone: 250 949-7231 [www.hardyrealty.ca](http://www.hardyrealty.ca)

**1038 Rupert Ave**  
**MLS# 16080**  
**4 Bed / 2 Full Bath**  
**You must see this home and admire the updates!**  
**Owners have relocated and didn't have time to finish the whole property but that lets you put your stamp on it! Come and view and then try your offer!**

**\$195,000**  
 Phone @ 250 949-7231 [www.hardyrealty.ca](http://www.hardyrealty.ca)

**102 - 801 Marine Dr**  
**MLS# 296735 - Condo**  
**3 Bed / 1 Bath - 951 Sq. Ft**

Just park your car & walk into your ground level suite. Your cabin to relax in, minutes walk to inlet.

**\$89,000**  
 Phone: 250 949-7231 [www.hardyrealty.ca](http://www.hardyrealty.ca)

**965 Haida**  
**MLS# 311188**  
**4 Bed / 2 Bath - 2548 Sq. Ft**

This is a very nicely updated family home - newer roof, hardwood, tile & carpet.

**\$194,900**  
 Phone: 250 949-7231 [www.hardyrealty.ca](http://www.hardyrealty.ca)

**1181 Maquinna Terrace**  
**MLS# 312476**  
**4 Bed / 3 Bath - 2440 Sq. Ft**

Awesome Kitchen! Pool Table included - view from patio & sundeck - must be seen!

**\$274,900**  
 Phone: 250 949-7231 [www.hardyrealty.ca](http://www.hardyrealty.ca)

**32 Rupert Ave**  
**MLS# 314604**  
**3 Bed / 2 Bath - End Unit with Garage**

Many recent upgrades incl. windows, ceramic tile foyer, etc. Nice enclosed sunroom, separate workshop. Oceanview from lrg Back deck. Private front patio.

**\$109,900**  
 Phone: 250 949-7231 [www.hardyrealty.ca](http://www.hardyrealty.ca)



## Advertising Rates

Classified Ads	\$2.00/issue
Business Card Size	\$4.00/issue
¼ page	\$8.00/issue
½ page	\$16.00/issue
Full page	\$32.00/issue

# RUMBLEFEST 2011

