

RUMBLE SHEET

Municipal Office Newsletter

February Deadline is January 24th

January 2022

Inside....

Village Municipal Office News.....	2-4
Community Centre.....	5-7
Emergency Information.....	8
Health Services & Information.....	9
Religious Services.....	10
Community Messages.....	11-15
Community Services & Business...	16-18
For Sale or Rent.....	19
Coloring Page.....	20

The Village Office will be closed from
Dec 24th - Jan 2nd.

The Community Centre will be closed
from Dec 24th - Jan 3rd.

Transfer Station will be open 9 -
3:30pm on Dec 24th, 27th & 31st

*Let us all do our part to keep
Port Alice clean and
beautiful. Please put your
garbage and pet waste into
the garbage cans provided
throughout
town.*



Municipal News

Merry Christmas from the Village of Port Alice! We hope you have a safe and enjoyable holiday season!

- We have it on good authority that Santa plans his annual visit with his favorite kids! Watch for his sleigh on December 17th about 6:45pm and make sure to come out to sing along to the Christmas carols and say hi! Make sure to send the kids out – hint hint!

- The Community Centre is working its way back to regular programming more and more each month – be sure to take advantage of the activities available for all ages!

- Please remember to keep boulevards clear for snow removal as we could see more in the coming weeks. As well, we ask that you keep the sidewalks in front of your home clear for safer walking in snow and icy conditions.

- Drive BC is a good resource to check before travelling this winter. It's important to ensure you have proper winter tires and a road safety kit packed. We wish everyone travelling over the holiday a safe trip!

Sidewalk & Footbridge Winter Maintenance Policy 2021 - 2022 Winter Season

During the 2021 - 2022 winter season, please be aware that the Village of Port Alice does not remove snow and/or ice from the public sidewalks in the village.

When the sidewalks and/or footbridges are covered with snow and/or ice they are very slippery. Please use extreme caution when walking on them. Under the policy the Public Works Crew is directed to clear the **footbridges only**, and only after the major roads and streets have been cleared.

We regret this inconvenience brought on by forces of nature, and remind you to use **extreme caution** when using the sidewalks and footbridges during the winter, and that you are doing so at your own risk.

This notice is published in accordance with Village of Port Alice Sidewalk & Footbridge Maintenance Policy Code No. 4.3.b.

Village Council Meetings

Council Meetings are held the 2nd & 4th month in the Sea View Activity Centre at 7pm. We are now able to allow up to 3 spectators within the safe distancing guidelines. We will continue to post agendas ahead of time and questions and/or responses can be sent to info@portalice.ca. Agendas are available online at portalice.ca

Village Council

Mayor:

Kevin Cameron.....284-6278
kcameron@portalice.ca

Councilors:

Holly Aldis.....209-0209
haldis@portalice.ca
Bruce Lloyd.....284-3365
bruce@portalice.ca
Sean Watson.....284-6266
swatson@portalice.ca
Angela Yunker.....284-6116
ayunker@portalice.ca

Municipal Office

1061 Marine Drive
PO Box 130, Port Alice, BC V0N2N0
250-284-3391

After hours emergency contact:

250-949-1228

Local Phone Numbers

RCMP (non-emergency).....284-3353
Health Centre.....284-3555
School.....284-3315
Public Works.....284-6612
Community Centre.....284-3912

TRANSFER STATION NOTICE

The Village Of Port Alice Transfer Station at the Public Works Yard is for **residential** use only. Contractors must dispose of waste at the 7 Mile Landfill.

Wood waste must be clean.

The Transfer Station does **not** accept drywall or asphalt roofing tiles.

Everyone can do their part to make the system work, please take the time to separate your waste properly and follow the signage placed around the yard.

Please refrain from flushing any type of disinfecting wipes, flushable wipes, or paper towel down your toilets. This will cause expensive damage to the Sewer System and can create issues for home owners as well.



Municipal Transfer Station (Outside)

721 Marine Drive

Open to Port Alice Residents

Monday - Friday 8:15 a.m. - 3:45 p.m.

(EXTENDED TO 6:00 pm TUESDAYS)

Saturdays 10 a.m. - 4 p.m.



Recycling Inside Depot

(Packaging and printed material)

Please drop off your **recycling** at the **inside depot** during operating hour

Saturday 10 a.m. - 4 p.m.

Tuesday 10 a.m. - 6 p.m.

Port Alice Recycling Depot Guide

Please bring to Recycling (Inside) Depot during Open Hours.



Glass



- Keep your returnable beverage bottles out of recycling

Styrofoam



We cannot recycle packing peanuts

Plastic Film



No stretch wrap
No Zip-lock bags

Fibre

- Cardboard & Boxboard
- Egg Cartons
- Newspapers & Inserts
- Magazines
- Catalogues
- Telephone Books
- General Use Paper
- Envelopes
- Greeting Cards
- Paper Bags



No Books, Foil Gift Wrap,
Ribbons or Padded Envelopes

1. Metal

- Metal Cans and Lids
- Aerosol Cans (NO Spray Paint Cans)
- Spiral Wound Cans (Steel Ends)
- Aluminum Foil and Foil Containers



2. Paper/ Cardboard

Paper & Cardboard that contained liquids when purchased

- Paper Cups
- Gable-top Milk Cartons
- Aseptic Boxes
- Multi-laminated Paper Packaging



3. Plastic

- Types 1, 2, 3, 4, 5, 6 & 7 plastic packaging.
- Plastic Bottles & Jars
- Plastic Clamshells
- Plastic Trays and Tops
- Plastic Tubs & Lids
- Plastic Drink Cups
- Plastic Pails (Up to 25L)
- Plastic Planter Pots and Trays



Containers Please rinse clean & remove lids

Community Centre Hours

Monday	CLOSED		
Tuesday	1pm	to	8pm
Wednesday	1pm	to	8pm
Thursday	1pm	to	8pm
Friday	1pm	to	8pm
Saturday	10am	to	6pm
Sunday	CLOSED		

Please call 284-3912 for more information



Adult Volleyball

This is for adults and mature teens. Vaccination passports required Please have a QR code ready to scan.. Bring a water bottle.

Wednesdays 6- 7:45 pm

Call the Community Centre at 250-284-3912 for more information



Port Alice Community Centre/ Seavac Room Rentals

Are you a crafter, artist, cook or a fitness trainer? Want to share your talents with others? Room bookings are affordable. It is a great way to share your talents with the community and meet other people.

*Gym/Larry Pepper room
Home Economics Room
\$13/hr*

*Activity Rooms
\$8/hr*

*Give us a call at 250-284-3912
for more details*



Adult Badminton

Tuesdays 6 - 7:45pm

This is for adults and mature teens.
Vaccination passport required.
Please have a QR code ready to scan.
Please call the Community Centre at
250-284-3912 for more information.



BODY GROOVE WORKOUT

FOR ADULTS OF ANY AGE OR FITNESS LEVEL.
MATURE TEENS WELCOME.
BRING A FRIEND AND HAVE SOME FUN!
INSTRUCTION BY DVD

**Tuesdays 2:15 – 3pm &
Wednesdays 2:15 – 3pm**

Call the Community Centre at 250-284-3912 for more information. Vaccination passports required. Please have a QR code ready to scan.



Yoga

Instructor on hand.

**Mondays & Wednesdays
7 - 8:15pm**

Vaccination passports required. Please have a QR code ready to scan.

Please call the Community Centre at 250-284-3912 for more information.



New Times

**Tuesday to Thursday
3 - 4:30pm**

**Friday
2 - 4:30pm
5 - 8pm**

**Saturday
10 - 6pm**

This time is for all ages. Lots of activities to choose from.

Open Gym

Children under 5 years old must have direct adult supervision.



Parents: please make sure we have a current information form on file for your child.

Tot Open Gym



**Tuesday to Thursday
2 - 3pm**

This is for toddlers, ages babies to 4 years old, and their families to gather and have fun.

Tot toys will only be available during this time.

Call 250-284-3912 for more information



Tai Chi

This is for adults and mature teens of any skill level. On hand instructors to show you the way.

Good for all fitness levels. Give it a try.

New learners welcome

Tuesday to Saturday

1 - 2pm

Call the Community Centre at 250-284-3912 for more information.

Vaccination passport required. Please have a QR code ready to scan.



SIT FIT

Thursdays – 2:15PM @ The Community Centre

Proper social distancing practices will remain in place

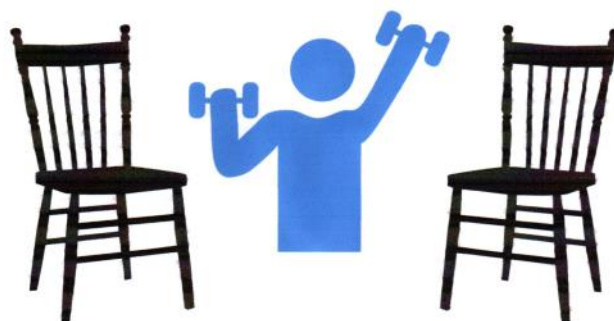
Contact tracing form, and screening questionnaire are required before entry.

Will comply with all community centre rules and regulations

Sit Fit is offered for free by the Port Alice Community Paramedic

For any questions please contact me by phone or email

EMAIL: CP.PortAlice@bcchs.ca Phone: (250)-209-6551



Staff would like to thank Corrine Tiberghien and Oceanview Assembly for helping and donating goodies for the Seniors Dessert.

We would like to also thank the following businesses for donating to our Christmas Bingo:

Salon Wild

The Pizza Place

North Island Images

Port Alice Photography

Happy New Year from the Community Centre Staff!



Adult Walking Club

This is for Adults only, to have a safe and comfortable space to walk in. Bring a friend and chat away while listening to upbeat music.

Tuesday to Friday

1 - 2pm

Vaccination passports required. Please have a QR code to scan.

Please call the Community Centre at 250-284-3912 for more information



Grab-and-Go Bag



With more stormy weather in the forecast, it's a great time to make sure you've taken steps to protect your family and your home. It's a good time to check those flashlight batteries too! It is your responsibility to ensure you and your household are properly prepared for an emergency. Taking a few minutes to prepare before an event can take a lot of the fear and panic out of an emergency situation. 72-Hour kits can be purchased complete or are easy to put together on your own. www.getprepared.gc.ca is an excellent resource to use and the Community Centre has Emergency Preparedness info packs ready to go!

<https://www.getprepared.gc.ca/cnt/rsrscs/pblctns/svrstrms-wtd/index-en.aspx#:~:text=If%20you%20are%20indoors%20during,your%20emergency%20kit%20with%20you.>



PreparedBC

BASIC EMERGENCY KIT SUPPLIES

gov.bc.ca/PreparedBC



First aid kit, prescriptions and other personal items



Emergency plan, copies of important documents and cash



Garbage bags, moist towelettes and plastic ties



Battery-powered or hand-crank radio



Phone charger and battery bank



Blanket, seasonal clothing and footwear



Battery-powered or hand-crank flashlight



Non-perishable food for at least three days



Water for at least three days; four litres per person per day



Whistle

Health Services & Information

Port Alice Health Centre

1090 Marine Drive

Open 7 days/week, 8:30-4:30

A doctor is available Mon-Thurs.

A nurse is on site 7 days/week, excluding statutory holidays

Urgent care after hours is available via 911 starting Sundays at 9pm and ends Thursdays at 4:30pm

To reach the centre call 250-284-3555 and dial:

- **Line 1** to reach the nursing station
- **Line 3** to reach the doctor's office

Lab & X-Ray Schedule:

Lab is open Monday to Friday

X-Ray schedule is Tuesdays & Thursdays by appointment.

To book a Laboratory Appointment::

v2.waitwhile.com/book/pahlab or
call 250-284-3555 ext 3

Additional Supports available Through the Centre include:

- Home Support
- Diabetes Educator
- Dietician
- Public Health
- Home & Community Care Nursing
- Telehealth
- Occupational therapy
- Chronic disease management
- Mental Health Substance Use Counselling
- Social Work
- Harm Reduction Services

Talk to your doctor or call the Centre at 250-284-3555, ext 3, to be connected to any of these services.

Infant Development Program:

When your baby needs extra help, please email reception@nicccs.org or call 250-949-8323 and Ask for the Infant Development Program.

Vancouver Island Crisis Line: 1-888-494-3888

The Port Alice Health Centre is arranging phone appointments for patients that do not need to be seen in person by the doctor for issues such as prescription refills. Please call 250-284-3555 ex 3 to set up your appointments .

If you do need to go to the Health Clinic and are experiencing flu like symptoms please remember to wear a mask and sanitize your hands when you enter.

Thank you for keeping our local medical centre staff as safe as possible!

The Port Alice Health Forum Society

“Medical Wish Cupboard”

Vision/Purpose



The cupboard will store and distribute donated medical supplies and equipment. These items will be distributed free of charge for individuals in need of short term assistance with obtaining medical supplies and equipment. Assistance/advocacy will also be given to individuals whom need long term solutions for their medical needs.

If you have items which you can donate, or need some assistance – Please call:

Sandra Morgan 250-284-3301

Edith Chemago 250-284-0106

Catherine Beatty 250-284-6160

NORTH ISLAND CATHOLIC COMMUNITIES

Box 811, Port Alice, V0N 2N0

*Contact Joanie at 250-284-6129 for more
Information*

nicatholic@gmail.com



**Mass
Schedule**

REGULAR MASS SCHEDULE

St. Theresa's, Port Alice
Saturdays, 5 p.m.



St. Johns Anglican-United Fellowship

meets at St. John's Ecumenical Church
Sundays at 4:00 PM

We welcome you to come for worship, prayer,
praise, music, and fellowship.

Rev. Christine Muisse (250-949-6247)
ministers to us.

Jan services: 9th, 23rd and 30th.

Contact: Doris Pepper at 250.284.3572

Ocean View Christian Assembly

850 Marine Drive

Email: ovca@brooksbaycable.com

Facebook: Ocean View Christian Assembly
Everyone is Welcome.

Sunday Worship Service – 10:30 am

Monday Prayer Night – 6:30 pm

Ladies Coffee House

Wednesday 9:30 – 11:30 am

Come and meet other women in the
community for coffee and sometimes a craft.

For more info call:

Corrine Tiberghien: 250-230-0225 or

Hal Petersen: 250-209-0070



Royal Canadian Legion Branch 180

Phone: 250-284-3256

Hours: The hours of operation are 3:00 PM to 10:00 PM last call at 9:30 PM. We are open seven days a week. Everyone over the age of 19 is welcome.

VOLUNTEERS WANTED – Would you like to help with the preparation of meals, and/or serve. help with clean up? We would welcome your help. Leave your name, phone number and what you would like to help with at the bar. Thank You!

COVID – 19

COVID safety measures have been implemented in the Legion following guidelines from Work Safe BC. Please take note of the posted signs and follow the direction provided by the bar staff.

Masks are required on entering and when moving around the Legion. When seated they are not required.

In accordance with Provincial Health Orders, **proof of vaccination must be shown on entry.** As of October 24, patrons must show proof of two Covid vaccinations. Patrons only wishing to purchase off sales are not required to show proof of vaccination.

MEAT DRAWS – Friday and Saturdays 4:00 – 7:00pm

MEMBERSHIP – Membership gives you discounts at many businesses, helps veterans and contributes to the community. You must be 19 years of age. If you are new to Port Alice, you can transfer your membership without losing your years of service.

DARTS/POOL - Guests can now play pool and darts with some restrictions. Watch for information on the Dart League.

ATM: Branch 180 has an ATM. You don't have to be a member of the Legion to use the ATM.

NEXT MEETING General Meetings are held on the third Sunday of each month. Come out and support your Legion. Next meeting will be January 16, 2022.

LEGION DINNERS: Dinner announcements are posted around the village as well as on News and Views and the Legion page.

HAPPY NEW YEAR!



Community Messages

BC Strong Start Program

Participate with your young child (aged birth to five) in play-based early learning activities – including stories, music and art. At no cost to families, this early learning drop-in program helps prepare children for success in Kindergarten.

StrongStart BC programs provide rich learning environments designed for early learning development – language, physical, cognitive, social and emotional. Qualified early childhood educators lead learning activities where children find opportunity to make friends and interact with others of similar ages.

The overall learning experience is shared as parents and caregivers attend with their children and are encouraged to get involved in activities like telling stories, playing games and serving healthy snacks. Join us to learn new ways to support your children's learning, get information about community programs and services and make valuable connections with others attending the program.

The Port Alice Strong Start group meets Tuesday and Thursday mornings from 9 am to Noon.



For more information contact:

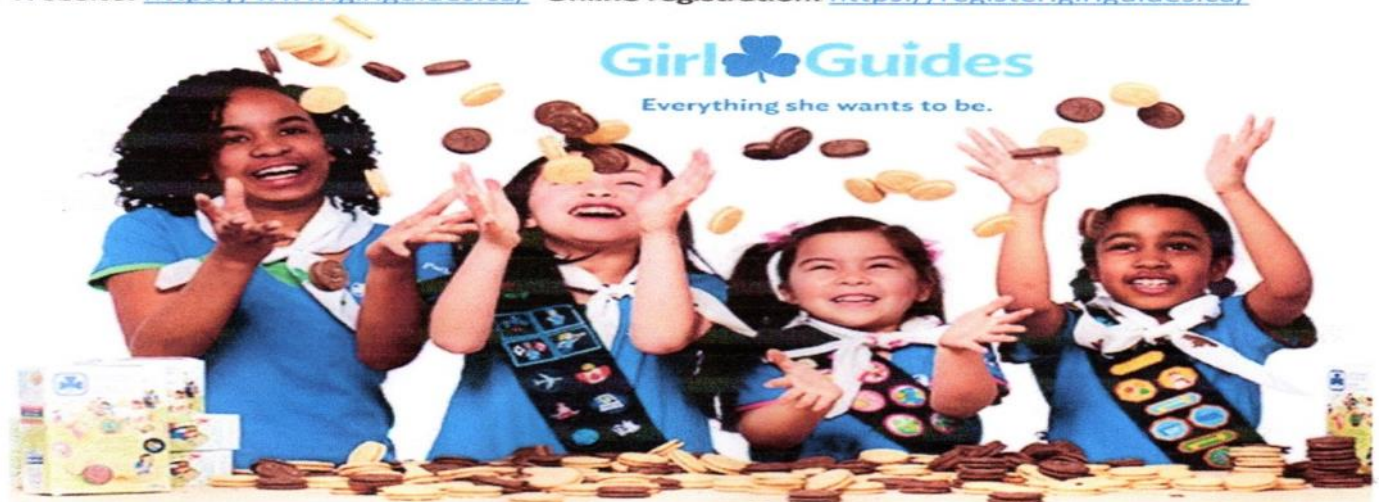
Melissa Middlemiss 403-376-6501 or
Corrine Tiberghien 250-230-0225



Port Alice Girl Guides

Do you have a Daughter that is registered in Kindergarten or older that is interested in joining Girl Guides? We require a minimum number of girls to start the unit up, please contact Ashley if you are interested in joining! Sparks: Ages 5-6, Grades K-1, Brownies: Ages 7-8, Grades 2-3 Guides: Ages 9-10-11, Grades 4-5-6, Pathfinders: Ages 12-13-14, Grades 7-8-9. We will hopefully be running Wednesday nights, and will be following all COVID Guidelines posted by both Girl Guides of Canada & BCCDC/Government

Contact Information: Ashley Boese - Unit Leader
Email: pagirlguides@outlook.com or Call or text 250-284-0015
Facebook: Please search "Port Alice Girl Guides Group"
Website: <https://www.girlguides.ca/> Online registration: <https://register.girlguides.ca/>



Community Messages



Port Alice Library

We're happy to announce that the newly refreshed Port Alice Library is now open for full hours. You are welcome inside the branch, a maximum of six people at a time. You can browse the shelves (up to 15 minutes) or use a computer (one person, up to 30 minutes). You can also pop in to grab your holds and a "Take & Make" craft kit.

Regular Library Hours:

Mon Closed
Tues 10-12 / 1-5
Wed Closed
Thu 1-4 / 5-8
Fri 1-5
Sat 10-2
Sun Closed

At the end of December and the beginning of January, we will be open the following holiday hours.

Dec 24	Dec 25	Dec 26	Dec 27	Dec 28	Dec 29	Dec 30
10-2	Closed				10-12 / 1-5	10-12 / 1-5
Dec 31	Jan 1	Jan 2	Jan 3	Jan 4		
10-2	Closed			Regular Hours Resume		

Happy holidays and best wishes to the Port Alice Library community!

Rumble Sheet Advertising Prices

Commercial Classified Ads \$2/line (\$6 minimum)

Business Card \$6/month

1/4 page Ad \$8/month

1/2 page Ad \$16/month

1 Full Page \$32/month

Notice to Advertisers

The Village of Port Alice *Rumble Sheet* newsletter is produced at the Community Centre.

Please email your information to:

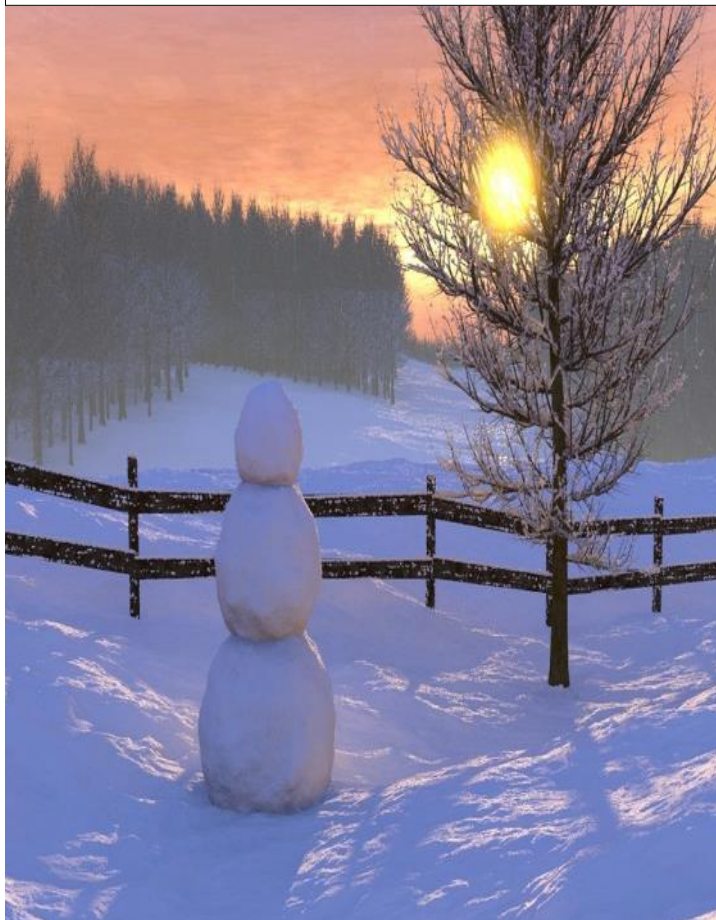
rumblesheet@portalice.ca or

contact the Community Centre to place

and pay for ads:

951 Marine Drive or call 250-284-3912

Deadline for February is January 24th



COVID-19 IN BC

PROOF OF VACCINATION REQUIRED

PLEASE HAVE YOUR BC VACCINE CARD AND ID READY



Patrons must show proof of COVID-19 vaccination, by order of the Provincial Health Officer. Please have your official proof of vaccination and government-issued photo ID ready. Thank you for helping to keep our community safe.

Community Messages



Wednesdays 7 - 8pm
At the Port Alice Community Centre.
Parking and entrance by the fence area.
Covid measures in place.
Call Jim at 284-0045 for enquiries



Mondays 6 - 7pm
At the Port Alice Community Centre.
Parking and entrance by the fence area.
Covid measures in place.
Call Gloria at 284-0045 or Renae at
284-6677 for enquiries



Port Alice Thrift Shop

Tues, Thurs & Sat
10:00 am – 2:00 pm
Located at Sea View Activity Centre.
(Parking Lot off Centennial Field Rd)

***Donations are only accepted on
Saturdays at this time***

HARVEST FOOD BANK

Harvest Food Bank in Port Hardy makes
food available to people in Port Alice,
which is delivered to town on the third
Wednesday of each month. Must register
at harvestfoodbank.org or call
Patrick at 250-284-3212 or the
food bank at 250-902-0332



Road Maintenance for the North Island is
now under the care of Mainroad Group.
The 24hr hotline number for the North
Island is:

1-877-215-7122

For more information, visit:
www.mainroad.ca

To report a wildfire

or irresponsible behaviour that could start a
wildfire in British Columbia,
please call
[1 800 663-5555](tel:18006635555) or
(*5555 from a cell phone) **as soon as
possible**. Information from the public is
crucial to the effectiveness of our response.



Port Alice Lions Club

Our **mission statement** is to serve our community by volunteering our time and providing financial assistance, to help our community with projects which benefit the town of Port Alice and its residents.

We support the visions of **Lions International** which empowers volunteers to serve their communities and meet humanitarian needs.

If you are interested in joining or would like some more information please contact our Membership Chairman Natalie Stewart @ 209-2454.

Volunteers Needed!



Marine Drive, Port Alice, B.C. 250-284-3213



2021 ANNUAL DUES

Adult	\$400.00
Student.....	\$200.00
Junior	Free!
Family.....	\$800.00

2021 ANNUAL GREEN FEES

9 Holes	\$ 15.00
All Day	\$ 25.00

ANNUAL LOCKER RENTAL

Member	\$ 15.00
Non-Member	\$ 30.00

FREE Junior Golf Mondays at 6 pm Including use of junior clubs

Any questions concerning Dues, Green Fees or Locker Rentals should be directed to:

Tom McCarthy 250-284-3483
or portalicegolf@gmail.com

Can you fill these boots?

It takes a special person to fill the boots of a volunteer firefighter.



Join the Port Alice Volunteer Fire Department

- Tuesday night practice at 7 pm
- FREE Training
- FREE Weight Room membership

The Port Alice Volunteer Fire Department is looking for new recruits; if you are interested in being part of the Fire Department please contact the **Fire Chief, Gerry Rose**, at 250 284-3946.

Or fill out the **Firefighter Application Form** available at the Village Office or on <http://portalice.ca/village-office/employment-volunteering> see (link on right side of page) and drop it off at the Village Office.

Port Alice
Gateway to the Wild West Coast

Family Sundays-play all day for only \$20!

Community Services & Businesses

Port Alice Petroleum Products

For all your fuel and fishing tackle needs.

We deliver marine fuel by appointment.

Please call 250-284-3530

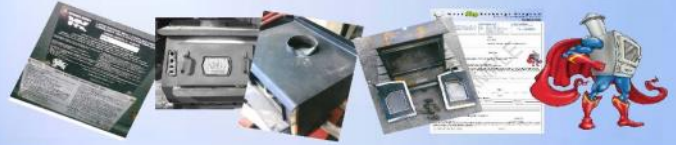
Mon - Fri 8 am - 6 pm

Sat 9 am - 6 pm

Closed Sundays & Holidays

- Gas
- Diesel
- Marked Mid-grade
- Propane
- Fishing Tackle & Bait
- Confectionary
- Local Artisans

Village of Port Alice Wood Stove Exchange Program



The Port Alice Wood Stove Exchange Program is designed to encourage residents to exchange their old, inefficient, non-EPA certified wood burning appliances for new EPA-certified wood burning stoves and inserts, and other qualifying appliances including gas, pellet and electric. (Some exceptions apply).

Port Alice residents who exchange their old wood-burning appliance for one qualified under the Program, are eligible to receive a **\$250 rebate**, providing that the old stove will be decommissioned and recycled.

Ask for details at the Village Office or look online at www.portalice.ca

Are you planning to replace a Wood or Pellet Stove? There's a **\$250 rebate** that can help reduce your costs!

Bashaw Storage

731 Marine Drive, P.O. Box 794, Port Alice, B.C. V0N 2N0

Self-contained, locked storage
5x10x10 Cubicle
10x10x10 Cubicle
Boat/Trailer Covered Stalls

**Jan Allen
Ken Bradshaw
250-284-3201
jcallen08@gmail.com**

5 x 10 x 10 Cubicle \$60/month

10 x 10 x 10 Cubicle \$90/month

(Self-contained, locked storage)

Boat/Trailer Covered Stalls

\$100 or \$105/month

284-3201

The absolute best deal for quality licensed/insured plumbing services.

- Serving the North Island for all your plumbing needs
- Red Seal endorsed with over 10 years experience
- 5 Star Google rated with a commitment to customer satisfaction!



"Noble House Plumbing responded immediately to my call. Russell was professional, quick and efficient and very reasonably priced. I give this company my highest recommendation."

— Helen Vokaty



Scan to see more
Google reviews

NHP
**NOBLEHOUSE
PLUMBING LTD.**

Russell Hewitt, Owner/Operator

236-996-4309

noblehouseplumbing@gmail.com



TOWNHOME - SHORT TERM RENTALS

- ✓ 750 SF – Private entrance with large deck
- ✓ 2 floors fully furnished & stocked kitchen
 - ✓ In-house laundry / BBQ / toiletries
- ✓ 1 bedroom + pull-out couch (Sleeps 4)

Short term rentals @ 179.00 per night


(based on double occupancy)



Call Michelle 778.242.0293 to Reserve!

mherli@shaw.ca

Web site: mherli.wixsite.com/portalice



**Masks
mandatory
in indoor
public
spaces**

COVID-19 IN BC



INSURANCE | INVESTMENT | RETIREMENT



FINANCIAL FUTURE
SAIL THROUGH YOUR RETIREMENT
250-228-0727

RENAE MARSHALL

WWW.FINANCIALFUTURENOW.COM
FINANCIALFUTURE@SHAW.CA



Community Services & Businesses

RUMBLE BEACH Fishing Charters & Eco-Tours



Regan Hickling
40 years plus experience
in local waters

250-284-6204 or 250-209-2779

Port Alice, BC info@rumblebeachfishingcharter.com
www.rumblebeachfishingcharter.com

Kristiansen Custom Framing & Art Gallery



510 Industrial Way
Port Alice, BC
Tel/Fax 250 284-3956

HUGH & McKINNON



Michelle Herlihy 778.242.0293
Real Estate Sales Staging & Media

mherli@shaw.ca

HANNELORE KRISTIANSEN



Commissioning
Portraits
Landscapes
Seascapes
phone/fax
250 284-3956
Port Alice, BC

Wanted

Looking for a cabin or lot on
Victoria Lake.

Call Rodney at 250-927-5196

FOR RENT

FOR SALE

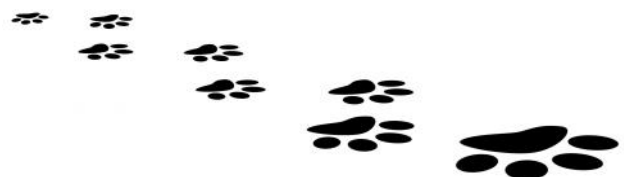
Dog Kennel

24"high, 22" wide, 30" long

Asking \$50

Kjell & Lore Kristiansen

250-284-3956



For Sale or Rent



405-1083 Maquinna-2 bed, 1 bath, ocean view-\$131,900	1144 Haida - 2 bed, 2 bath, updated home - \$475,000
800 Marine - vacant oceanfront lot - \$197,500	

We need your house!!

There are no homes for sale in Port Alice and we need inventory. If you are thinking about selling, now may be the time. Give us a call.

Royal LePage Advance Realty Ltd

(250)949-7231

Sarah Baron - sarahdbaron@gmail.com

Melanie McRann - melanie_mcrann@hotmail.com

FOR RENT

*Fully equipped kitchenettes *Large dining/living rooms

*Private locked access - 24/7 *Laundry facilities

*Private 2 bedroom suites *Professionally sanitized

*No daily rentals

Ideal for:

Short term rentals (not B&B) / Forestry workers

Contract workers in the Port Alice area

Call 250-897-2131 peterinnes007@gmail.com



ENVIRONMENTAL PROTECTION NOTICE

Application for a(n) Approval Under The Provisions of the *Environmental Management Act*

We/I, PricewaterhouseCoopers Inc., (PwC) in its capacity as Court-Appointed Receiver of Neucel Specialty Cellulose Ltd., intend to submit this application to the Director to authorize the discharge of air emissions from the former Neucel Specialty Cellulose Pulp and Paper Mill site approximately 6km south of the Village of Port Alice. This work is being carried out as part of the program to decommission and remove hazards from the facility. The source(s) of discharge would be combustion of wood residuals (hog fuel exposed to the marine environment, pallets, crates, etc.) in an air curtain burner.

Burning will occur as per the conditions of the application approval and may be 24 hours per day, seven days per week, weather permitting. The characteristics of the air emissions are typical of wood burning, listed as follows:

Contaminant	Maximum Emission Rate ¹ (kg/hr)	Total Emissions ² (tonnes)
Particulate Matter (PM10)	7.7	17.0
Oxides of Nitrogen (NOx)	1.6	3.5
Carbon Monoxide (CO)	6.9	15.2
Sulphur Oxides (SOx)	0.5	1.1
Volatile Organic Compounds (VOCs)	0.4	0.9
Chlorinated Compounds	1.4E-07	2.9E-07

¹ Estimated feed rate of 2 tonnes/hr.

² Total Emissions based on total estimated tonnage of 4,400 tonnes.

The opacity of emissions will be monitored to manage particulate matter. The air curtain burner is specifically designed to reduce smoke/particulate matter emissions as compared to open burning by continuously directing a curtain of air across the top of the firebox, creating downwards circulation.

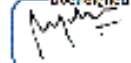
Any person who may be adversely affected by the proposed incineration activity and wishes to provide relevant information may, within 14 days after the last date of posting, publishing, service or display, send written comments to the applicant, with a copy to the Regional Director, Environmental Protection at Authorizations.South@gov.bc.ca. The identity of any respondents and the contents of anything submitted in relation to this application will become part of the public record.

Dated this 16th day of December, 2021.

Contact person: Rujuta Korgaonkar

Email address: ca_neucel@pwc.com

Phone: +1 604-484-3487

Documented by:

Rujuta Korgaonkar