

# RUMBLE SHEET

Municipal Office Newsletter

January deadline is December 15th

**December 2022**



The Public Works Yard and Transfer Station will be closed December 23rd to 26th, and January 2nd.

Inside Depot closed December 24th.

## Inside....

Village Municipal Office News.....2-4

Community Centre.....5--9

Health Services & Information.....10

Religious Services.....11

Community Messages.....12-17

Community Services & Business...18-19

For Sale or Rent.....20-21

Holiday Crossword.....22

The Village Office will be closed from December 23rd to January 3rd.



# Municipal Office News

## Municipal News - December

Winter has arrived! Please take time to make sure your household is prepared for whatever Mother Nature decides to throw at us this year. The Community Centre has info packs available with valuable information on how to be prepared. Emergency kits should be ready in both your homes and vehicles.

Please remember that property owners are to keep the sidewalks in front of their homes clear for walkers, if you know this will be difficult for a neighbor, grab a shovel and help out!

North Island bears do not always hibernate, and not in traditional ways. Please continue to be diligent with garbage and attractants. Thank you to everyone that has stepped up their efforts this year. We will continue to work towards improving our Bear Awareness and strategies to keep our furry neighbors safe.

Make sure to look at all the activities happening at the Community Centre through December. There's something for everyone to take part in! Thank you to all the volunteers and donors that help all of these events happen – we couldn't offer so many fun events without you!

Don't forget to watch on December 14<sup>th</sup> for the annual Sleigh ride with Santa and the Lions Club, the club will be collecting donations and toys for the Hamper Fund. Please note that the Gazette is only accepting money, gift cards, and new toys again this year. Santa will have some yummy treats for all the children in town, so bundle up and come out to say hi!

From Council and staff, we wish everyone a very Merry Christmas and a Happy New Year – we hope everyone has a safe and fun holiday season!

### **Sidewalk & Footbridge Winter Maintenance Policy 2022 - 2023 Winter Season**

During the 2022 - 2023 winter season, please be aware that the Village of Port Alice does not remove snow and/or ice from the public sidewalks in the village.

When the sidewalks and/or footbridges are covered with snow and/or ice they are very slippery. Please use extreme caution when walking on them. Under the policy the Public Works Crew is directed to clear the **footbridges only**, and only after the major roads and streets have been cleared.

We regret this inconvenience brought on by forces of nature, and remind you to use **extreme caution** when using the sidewalks and footbridges during the winter, and that you are doing so at your own risk.

**This notice is published in accordance with Village of Port Alice Sidewalk & Footbridge Maintenance Policy Code No. 4.3.b.**

## Village Council Meetings

Council Meetings are held the 2nd & 4th Wednesday of the month in the Village Council Chambers at 7:00pm. If there is an issue or concern that you wish to address Council about, you may request delegate status by submitting a signed letter of request by 5:00pm on the Thursday prior to the next meeting.

### Village Council

#### Mayor:

Kevin Cameron

kcameron@portalice.ca

#### Councilors:

Holly Aldis

haldis@portalice.ca

Russell Murray

rmurray@portalice.ca

Dave Stewart

dstewart@portalice.ca

Sean Watson

swatson@portalice.ca

## Municipal Office

1061 Marine Drive

PO Box 130, Port Alice, BC V0N2N0

250-284-3391

After hours emergency contact:

250-949-1228

### Local Phone Numbers

RCMP (non-emergency).....284-3353

Health Centre.....284-3555

School.....284-3315

Public Works.....284-6612

Community Centre.....284-3912

# **BEST WASTE MANAGEMENT PRACTISSES WITH WILDLIFE A CHEATSHEET**

## **1. USE TRANSFER STATION HOURS REGULARLY**

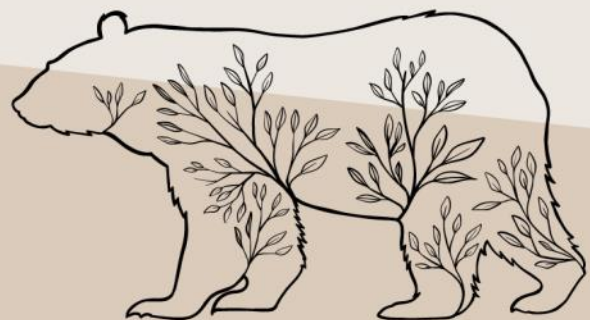
Mon: 11:00am to 3:00pm  
Tues: 10:00am to 6:00pm  
Wed: 11:00am to 3:00pm  
Thurs/Fri: 11:00am to 3:00pm  
Sat: 10:00am to 4:00pm  
Sunday: CLOSED

## **2. BE AWARE OF NON FOOD ATTRACTANTS**

- Kitty Litter
- Diapers
- Propane and other petroleum-based products
- Oils
- Fragrant Cosmetics; sunscreen, perfume, shampoos and soaps etc.

## **3. QUICK TIPS**

- Ensure all garbage bins are firmly latched
- Compostable items should be frozen until the morning of pick-up
- BBQ grills and grease pans must be cleaned after use and stored in a secure place
- Fish waste should be thrown back into the ocean and not in household garbage
- Make sure to pick up ripe and rotten fruit/berries in a timely fashion





## **TRANSFER STATION NOTICE**

The Village Of Port Alice Transfer Station at the Public Works Yard is for **residential** use only. Contractors must dispose of waste at the 7 Mile Landfill.

Wood waste must be clean.

**The Transfer Station does not accept drywall or asphalt roofing tiles.**

Everyone can do their part to make the system work, please take the time to separate your waste properly and follow the signage placed around the yard.

-----  
Please refrain from flushing any type of disinfecting wipes, flushable wipes, or paper towel down your toilets. This will cause expensive damage to the Sewer System and can create issues for home owners as well.



### **Municipal Transfer Station (Outside)**

**721 Marine Drive**

Open to Port Alice Residents

**Mon, Wed, Thur and Fri 11am - 3pm**

**Tue 10am - 6pm**

**Sat 10am - 4pm**



### **Recycling Inside Depot**

(Packaging and printed material)

Please drop off your **recycling** at the **inside depot** during operating hour

**Saturday 10 a.m. - 4 p.m.**

**Tuesday 10 a.m. - 6 p.m.**

# WEEKLY PROGRAM GUIDE

## Community Centre

SUNDAY CLOSED	MONDAY CLOSED	TUESDAY 1PM - 8PM	WEDNESDAY 1PM - 8PM	THURSDAY 1PM - 8PM	FRIDAY 1PM - 8PM	SATURDAY 10AM-6PM
	<b>Sit Fit</b> 10am - 11am (entrance at front of building)	Computer Room 1pm - 8pm  Walking Club 1pm - 2pm  Tai Chi 1pm - 2pm  Mahjong 2pm - 4pm  Tot Open Gym 2pm - 3pm  Open Gym 3pm - 8pm	Computer Room 1pm - 8pm  Walking Club 1pm - 2pm  Tai Chi 1pm - 2pm  Mahjong 2pm - 4pm  Tot Open Gym 2pm - 3pm  Open Gym 3pm - 5:30pm  Ball Hockey 6pm - 7:45pm  Yoga 7pm - 8:15pm	Computer Room 1pm - 8pm  Walking Club 1pm - 2pm  Tai Chi 1pm - 2pm  Mahjong 2pm - 4pm  Tot Open Gym 2pm - 3pm  Open Gym 3pm - 5:30pm  Badminton 6pm - 7:45pm	Computer Room 1pm - 8pm  Tai Chi 1pm - 2pm  Mahjong 2pm - 4pm  Kids Club 1pm - 4pm  Teen Takeover 5pm - 8pm	Computer Room 10am - 6pm  Open Gym 10am - 6pm  Tai Chi 1pm - 2pm  Mahjong 2pm - 4pm  Community Market Dec 3rd

Check out our Facebook page, **PORT ALICE COMMUNITY CENTRE**, for up to date programming information and daily announcements.

## Community Centre Hours

Effective starting September 6th

Monday	<b>CLOSED</b>		
Tuesday	1pm	to	8pm
Wednesday	1pm	to	8pm
Thursday	1pm	to	8pm
Friday	1pm	to	8pm
Saturday	10am	to	6pm
Sunday	<b>CLOSED</b>		

Please call 284-3912 for more information



## Yoga

Instructor on hand.

**Mondays & Wednesdays  
7 - 8:15pm**

Please call the Community Centre at 250-284-3912  
for more information.



## Mahjong

This is for adult players. Instructors on hand.

New learners welcome

**Tuesday to Saturday**

**2 - 4pm**

Please call the Community Centre at  
250-284-3912 for more information



## Tai Chi

This is for adults and mature teens of any skill  
level. On hand instructors to show you the way.

Good for all fitness levels. Give it a try.

New learners welcome

**Tuesday to Saturday**

**1 - 2pm**

Call the Community Centre at 250-284-3912  
for more information.





## Badminton

**Thursdays 6 - 7:45pm**

All ages welcome!

Please call the Community Centre at 250-284-3912 for more information.



## Teen Takeover at the Community Centre

Come hang out in the gym  
and enjoy some of the  
various activities we have  
to offer!

**Fridays**

**5-8pm**

Small concession available!



**Ages 10+**

## Competitive Ball Hockey Club



For Adults & Mature Teens

Starting September 7th

Wednesdays 6- 7:45pm

Bring your own gear or sticks available at the community centre  
Please call the community centre at 250-284-3912 for more information



## Adult Walking Club

This is for Adults only, to have a safe and comfortable space to walk in. Bring a friend and chat away while listening to upbeat music.

**Tuesday to Thursday**

**1 - 2pm**

Please call the Community Centre at 250-284-3912 for more information





## Kids Club

Ages 5 - 9 years

Fridays 1- 4pm

This time is just for them to play with their friends and have some fun!

Lots of things to do:

- \*Games
- \*Toys
- \*Gym

And so much more!

Concession items available.

Call the Community Centre for more information at 284-3912



## Tot Open Gym



**Tuesday to Thursday  
2 - 3pm**

This is for toddlers, ages babies to 4 years old, and their families to gather and have fun.

Tot toys will only be available during this time.

Call 250-284-3912 for more information

## SIT FIT

Improve and maintain your mobility and range of motion, while having a great social outing! Join Deanna in our new Sit Fit classes. All mobility levels welcome! Stretch your body from head to toe and see the difference a little bit of movement and fun will make. Laughter is the best medicine and there will be plenty of that here.

Starting September 12  
Mondays at 10 am at the Community Center



## Open Gym

**Tuesday  
3 - 8pm**

**Wednesday & Thursday  
3 - 5:30pm**

**Saturday  
10 - 6pm**

This time is for all ages. Lots of activities

*Parents: please make sure we have a current information form on file for your child.*

*Children under 5 years old must have direct adult supervision.*





# *Community Centre Holiday Closure*

*The Community Centre will be closed  
from Saturday December 24th until  
Monday January 2nd, 2023.*

*We will be back open for regular  
hours on Tuesday January 3rd.*

*Happy Holidays from all of us Staff  
and have a Happy New Year!*



### **Holiday Save the Dates!** **Watch for posters for more details!**

**September 13<sup>th</sup> – Club Night** – Come and see what the town has to offer.

**October 29<sup>th</sup> – Halloween Carnival** – Family games & costume contest

**November 20<sup>th</sup> – Christmas Creations Craft Fair** – Crafters from the all over the Island come together to share their wares. Get started on Christmas shopping and get into the holiday spirit!

**November 27<sup>th</sup>– Tree Light Up** – Join us at the Fire Hall as we illuminate the night sky. Caroling, Hot Chocolate and Cookies, everyone welcome!

**December 5<sup>th</sup> - Ladies Desert Night** – This is a free fun-filled evening to help get you into the holiday spirit. Presented by the Oceanview Christian Assembly.

**December 6<sup>th</sup> – Wreath-making & Family Crafts-** Make beautiful holiday wreath for yourself or as a gift!

**December 8<sup>th</sup>- Santa Hats** – Make a adorable Santa Hat to display.

**December 9<sup>th</sup>- Cookie Creations & Crafts** -A fun filled night for the whole family; decorate delicious sugar cookies. A great way to kick off the holiday season!

**December 10<sup>th</sup> - Adult Christmas Potluck-** we supply the meat, bring a side-dish or dessert to share. BINGO to follow supper, all mature adults welcome!

**December 13<sup>th</sup> – Cookie Exchange** – Bake your holiday favorites to exchange with others!

**December 17<sup>th</sup> – Breakfast with Santa** – Don't miss the annual Christmas party, with special guest, Santa Claus! Enjoy some breakfast at 10am and a photo op with Santa at 11am. All ages BINGO starts at 1pm. Fun for the whole family, free, everyone is welcome!



**Please call the Port Alice Community Centre at  
(250)284-3912 for more information about any of our special events  
Tuesday-Friday 1:00-8:00pm, Saturdays 10am-6pm**

**Check out the Recreation pages in the monthly Rumble Sheet and  
the Port Alice Community Centre Facebook page for other events &  
activities, as well as regular weekly programs.**

## Health Services & Information

### Port Alice Health Centre

1090 Marine Drive

Open 7 days/week, 8:30-4:30

A doctor is available Mon-Thurs.

A nurse is on site 7 days/week, excluding statutory holidays

Urgent care after hours is available via 911 starting Sundays at 9pm and ends Thursdays at 4:30pm

**To reach the centre call 250-284-3555 and dial:**

- **Line 1** to reach the nursing station
- **Line 3** to reach the doctor's office

#### Lab & X-Ray Schedule:

**Lab** is open Monday to Friday

**X-Ray** schedule is Wednesdays & Thursdays by appointment.

To book a Laboratory Appointment::

[v2.waitwhile.com/book/pahlab](https://v2.waitwhile.com/book/pahlab) or

call 250-284-3555 ext 3

#### Additional Supports available Through the Centre include:

- Home Support
- Diabetes Educator
- Dietician
- Public Health
- Home & Community Care Nursing
- Telehealth
- Occupational therapy
- Chronic disease management
- Mental Health Substance Use Counselling
- Social Work
- Harm Reduction Services

Talk to your doctor or call the Centre at 250-284-3555, ext 3, to be connected to any of these services.

#### Infant Development Program:

When your baby needs extra help, please email [reception@nicccs.org](mailto:reception@nicccs.org) or call 250-949-8323 and

Ask for the Infant Development Program.

Vancouver Island Crisis Line: 1-888-494-3888

Port Alice Health Centre patients can be seen in-person or over the telephone for select reasons. Masks are required; one may be provided at the door.

Please be aware that we are experiencing high patient volumes. Please book your appointments early and notify the clinic right away if you need to cancel an appointment.

If you do need to go to the Health Clinic and are experiencing flu like symptoms please remember to wear a mask and sanitize your hands when you enter.

*Thank you for keeping our local medical centre staff as safe as possible!*

### The Port Alice Health Forum Society

#### “Medical Wish Cupboard”

##### Vision/Purpose



*The cupboard will store and distribute donated medical supplies and equipment. These items will be distributed free of charge for individuals in need of short term assistance with obtaining medical supplies and equipment. Assistance/advocacy will also be given to individuals whom need long term solutions for their medical needs.*

**If you have items which you can donate, or need some assistance – Please call:**

**Sandra Morgan** 250-284-3301

**Edith Chemago** 250-284-0106

**Catherine Beatty** 250-284-6160



## Religious Services

### **NORTH ISLAND CATHOLIC COMMUNITIES**

Box 811, Port Alice, V0N 2N0

Contact Joanie at 250-284-6129 for more  
Information

[nicatholic@gmail.com](mailto:nicatholic@gmail.com)



Mass  
Schedule

### **REGULAR MASS SCHEDULE**

**St. Theresa's, Port Alice**  
Saturdays, 5 p.m.



### **St. Johns Anglican-United Fellowship**

meets at St. John's Ecumenical Church  
**Sunday at 4:00 PM**

We welcome you to come for worship, prayer,  
praise, music, and fellowship.

Rev. Christine Muise (250-949-6247)  
ministers to us.

**Contact:** Doris Pepper at 250.284.3572

For there is born to you this day in the city of  
David a Savior, who is Christ the Lord.  
Luke 2:11

### **Ocean View Christian Assembly**

850 Marine Drive

Email: [ovca@brooksbaycable.com](mailto:ovca@brooksbaycable.com)

Facebook: Ocean View Christian Assembly  
Everyone is Welcome.

Sunday Worship Service – 10:30 am

Monday Prayer Night – 6:30 pm

Ladies Coffee House

Wednesday 9:30 – 11:30 am

Come and meet other women in the  
community for coffee and sometimes a craft.

For more info call:  
Corrine Tiberghien: 250-230-0225 or  
Hal Petersen: 250-209-0070

### **COFFEE HOUSE BY THE SEA**

*Ladies, come and join us at the Wednesday  
morning Coffee House hosted by Ocean View  
Christian Assembly Church. We are located at  
850 Marine Drive in Port Alice and hours of  
operation are from 9:30 am to 11:30 am. each  
Wednesday morning.*

*All ladies are welcome to enjoy times of fellowship  
and crafts over a hot cup of coffee or tea while  
you nestle in a safe, warm, and confidential  
environment.*

*For further information, feel free to contact  
Lorna Petersen at 250-209-3921 or  
Diane Lloyd at 250-706-9475.*

## Royal Canadian Legion Branch 180

**Phone: 250-284-3256**

**Hours:** 4:00 PM to 11:00 PM,

**Christmas Eve Hours:** 4:00 to 8:00 PM

**Closed Christmas Day**

**Closed New Year's Day**

**Calm Waters Café – Saturdays 8 – 11 AM Watch** for Christmas Closures

**VOLUNTEERS WANTED** – Would you like to help with the preparation of meals, and/or serve. help with clean up? **We welcome your help.** Leave your name, phone number and how you would like to help at the bar. The more volunteers we have, the more dinners we can put on! Thank You!

**DEW:** **DEW** Thursday mornings – 10:00 to 11:00. Last DEW for the year December 15, Open again January 5, 2023. Everyone welcome.

**MEAT DRAWS – Every Friday and Saturday.** Proceeds to the Bursary Fund.

**MEMBERSHIP** – Membership gives you discounts at many businesses, helps veterans, and contributes to the community. You must be 19 years of age. If you are new to Port Alice, you can transfer your membership without losing your years of service

**DARTS** – Watch for upcoming dart announcements.

**POOL** – Come in with your friends and have a game of pool.

**ATM:** Branch 180 has an ATM. You don't have to be a member of the Legion to use the ATM.

**Roast Beef Dinner:** December 16, 2022, 5 to 7:00 PM. Sign up at the bar by December 12, 2022. It is important to sign up as early as possible, so we know how many dinners to prepare.

**NEXT GENERAL MEETING:** *January 29, 2023*, at 12:30 PM. Elections for your 2022/2023 Executive at the November meeting. Come and support your Legion.

**January meeting will host Zone Commander Comrade Cliff Slack.** The 2023 Executive will be initiated at that meeting.



## Adult Recreational Day Program



island health

**PORT ALICE**

Seaview Activity Centre

*Every Tuesday 10am-2pm*

What does the program consist of?

There will be a variety of **social, cognitive and physical activities** planned during the duration of the program.

There will also be refreshments along side Tea & Coffee.

Every program will offer a **lunch!**

**There is \$5 fee per visit.**

Must register to join. Please call or email:

**Judy Molloy– Program Coordinator**

Direct Telephone: 250-527-0266

E-mail: [judy.molloy@islandhealth.ca](mailto:judy.molloy@islandhealth.ca)



## LETS DEW THIS!

### *DIET, EXERCISE, WELLNESS*

Join us Thursdays from 10–11AM

at the Port Alice Legion

to discuss health topics,

meet new friends,

and share some laughs!

Facilitated by Silja RN and Sarah RSW

from the Port Alice Health Centre

*Everyone Welcome!*



**The  
Port Alice  
DEW Group**

CHECK OUT OUR FACEBOOK GROUP FOR UP TO DATE INFO  
[HTTPS://FACEBOOK.COM/PORTALICEDEW/](https://facebook.com/portalicedew/)





### Port Alice Library

#### Regular Library Hours:

Mon Closed

Tue 10-2/1-5

Wed Closed

Thu 1-4/5-8

Fri 1-5

Sat 10-2

Sun Closed

### Rumble Sheet Advertising Prices

Commercial Classified Ads \$2/line (\$6 minimum)

Business Card \$6/month

1/4 page Ad \$8/month

1/2 page Ad \$16/month

1 Full Page \$32/month

### Notice to Advertisers

The Village of Port Alice *Rumble Sheet* newsletter is produced at the Community Centre.

Please email your information to:

[rumblesheet@portalice.ca](mailto:rumblesheet@portalice.ca) or

contact the Community Centre to place  
and pay for ads:

951 Marine Drive or call 250-284-3912

**Deadline for January is December 15th**



### Village of Port Alice

#### Wood Stove Exchange Program



The Port Alice Wood Stove Exchange Program is designed to encourage residents to exchange their old, inefficient, non-EPA certified wood burning appliances for new EPA-certified wood burning stoves and inserts, and other qualifying appliances including gas, pellet and electric. (Some exceptions apply).

Port Alice residents who exchange their old wood-burning appliance for one qualified under the Program, are eligible to receive a **\$250 rebate**, providing that the old stove will be decommissioned and recycled.

**Ask for details at the Village Office or look online at [www.portalice.ca](http://www.portalice.ca)**

**Are you planning to replace a Wood or Pellet Stove? There's a \$250 rebate that can help reduce your costs!**

## Community Messages



Wednesdays 7 - 8pm  
At the Port Alice Community Centre.  
Parking and entrance by the fence area.  
Covid measures in place.  
Call Jim at 284-0045 for enquiries



Mondays 6 - 7pm  
At the Port Alice Community Centre.  
Parking and entrance by the fence area.  
Covid measures in place.  
Call Gloria at 284-0045 or Renae at  
284-6677 for enquiries

### Port Alice Thrift Shop

Tues, Thurs & Sat  
10:00 am – 2:00 pm  
Located at Sea View Activity Centre.  
(Parking Lot off Centennial Field Rd)

***Donations are only accepted on  
Saturdays at this time***

### HARVEST FOOD BANK

Harvest Food Bank in Port Hardy makes  
food available to people in Port Alice,  
which is delivered to town on the third  
Wednesday of each month. Must register  
at [harvestfoodbank.org](https://harvestfoodbank.org) or call  
Patrick at 250-284-3212 or the  
food bank at 250-902-0332

Road Maintenance for the North Island is  
now under the care of Mainroad Group.  
The 24hr hotline number for the North  
Island is:

**1-877-215-7122**

For more information, visit:  
[www.mainroad.ca](https://www.mainroad.ca)

### To report a wildfire

or irresponsible behaviour that could start a  
wildfire in British Columbia,  
please call  
[1 800 663-5555](tel:18006635555) or  
(\*5555 from a cell phone) **as soon as  
possible**. Information from the public is  
crucial to the effectiveness of our response.



### Port Alice Lions Club

Our **mission statement** is to serve our community by volunteering our time and providing financial assistance, to help our community with projects which benefit the town of Port Alice and its residents.

We support the visions of **Lions International** which empowers volunteers to serve their communities and meet humanitarian needs.

**If you are interested in joining or would like some more information please contact our Membership Chairman Natalie Stewart @ 209-2454.**

**Volunteers Needed!**



Marine Drive, Port Alice, B.C. 250-284-3213



#### 2022 ANNUAL DUES

Adult .....	\$400.00
Student.....	\$200.00
Junior .....	Free!
Family.....	\$800.00

#### 2022 ANNUAL GREEN FEES

9 Holes .....	\$ 15.00
All Day .....	\$ 25.00

#### ANNUAL LOCKER RENTAL

Member .....	\$ 15.00
Non-Member .....	\$ 30.00

#### FREE Junior Golf Mondays at 6 pm Including use of junior clubs

Any questions concerning Dues, Green Fees  
or Locker Rentals should be directed to:  
or [portalicegolf@gmail.com](mailto:portalicegolf@gmail.com)

*Family Sundays-play all day for only \$20!*

#### Join the Port Alice Volunteer Fire Department!

- \*Tuesday night practice at 7pm
- \* Free Training
- \*Free Weight Room membership
- \*and much more

Our Volunteer Fire Department is a necessary part of our small community and we are in need of some new recruits. If you are interested in being part of the Fire Department, please contact the Fire Chief, Gerry Rose at 250-284-3946.

Or fill out the **Firefighter Application Form** available at the Village Office or on <http://portalice.ca/village-office/employment-volunteering> and drop off at the Village Office.





## Port Alice Petroleum Products

For all your fuel and fishing tackle needs.

We deliver marine fuel by appointment.

**Please call 250-284-3530**

**Mon - Fri 8 am - 6 pm**

**Sat 9 am - 6 pm**

**Closed Sundays & Holidays**

- Gas
- Diesel
- Marked Mid-grade
- Propane
- Fishing Tackle & Bait
- Confectionary
- Local Artisans

## Bashaw Storage

731 Marine Drive, P.O. Box 794, Port Alice, B.C. V0N 2N0

Self-contained, locked storage

5x10x10 Cubicle

10x10x10 Cubicle

Boat/Trailer Covered Stalls

**Jan Allen**

**Ken Bradshaw**

**250-284-3201**

**jcallen08@gmail.com**

**5 x 10 x 10 Cubicle \$65/month**

**10 x 10 x 10 Cubicle \$100/month**

(Self-contained, locked storage)

**Boat/Trailer Covered Stalls**

**\$115 or \$125/month**

**284-3201**



## Community Services & Businesses

### RUMBLE BEACH Fishing Charters & Eco-Tours



Regan Hickling  
40 years plus experience  
in local waters

250-284-6204 or 250-209-2779

Port Alice, BC info@rumblebeachfishingcharter.com  
www.rumblebeachfishingcharter.com



Advance Realty Ltd. 

YOUR LOCAL PORT ALICE REALTOR



Johan Olsen  
Realtor ®

Phone: 250.209.9667

Email: johanolsen@royallepage.ca

HUGH &  
McKINNON  
REALTORS  
SINCE 1984

 Michelle Herlihy 778.242.0293  
Real Estate Sales Staging & Media

mherli@shaw.ca



HANNELORE  
KRISTIENSEN

Commissioning

Portraits

Landscapes

Seascapes

phone/fax

250 284-3956  
Port Alice, BC



## LADIES DESSERT NIGHT THE COMFORT OF CHRISTMAS

Monday, December 5, 2022

6:00 pm—8:30 pm

At the Community Centre

A great evening of Fun, Laughter, Music, Craft and  
Delicious Cheesecakes and Desserts !!

This is a **FREE** event hosted by the  
Women of Ocean View Church

Tickets will be available at the Community Market on Nov. 5  
as well as the Christmas Market on Nov. 20

Ladies Coffee House on Wednesday morning 9:30-11:30 am at Ocean View Church  
or by calling Corrine at 250-230-0225

## For Sale or Rent

1083 Maquinna Ave

2 bedroom, 1 bathroom

Show suite, extra features

\$159,900 for sale

\$1200/month to rent

Call Blair Verbin at

780-903-4060

## For Sale or Rent

302 - 1073 Maquinna Ave

2 bedroom, 1 bathroom

Furnished, recently renovated

\$119,900 for sale

\$1000/month to rent

Call Blair Verbin at

780-903-4060



### TOWNHOME - SHORT TERM RENTALS

- ✓ 750 SF – Private entrance with large deck
- ✓ 2 floors fully furnished & stocked kitchen
  - ✓ In-house laundry / BBQ / toiletries
- ✓ 1 bedroom + pull-out couch (Sleeps 4)

Short term rentals @ 179.00 per night

(based on double occupancy)



Call Michelle 778.242.0293 to Reserve!

mherli@shaw.ca

Web site: [mherli.wixsite.com/portalice](http://mherli.wixsite.com/portalice)

# SALE

Woodworking and various tools  
for sale. Great deals to be had.  
Don't miss out!!

Plus, work shop available for rent.

Contact Lore at 250-284-3956  
for more details and to arrange  
a viewing.



## For Sale or Rent



16 Dogwood - 2 bed, 3 bath , renovated - \$198,000	208-791 Marine - 1 bed + den, fresh paint - \$95,000
1114 Haida - 3 bed, 1 bath, partial renos - \$269,000	301-1073 Maquinna - 2 bed, 1 bath - \$119,000
205-791 Marine - 1 bed + den, updated bath - <b>SOLD</b>	1154 Haida - 4 bed, 2 bath, fully furnished - <b>SOLD</b>
106-1053 Maquinna - 2 bed, 1 bath, furnished - <b>SOLD</b>	405-1083 Maquinna - 2 bed, 1 bath, views - \$103,900
	1091 Marine .- commercial lot, zoned C-1, \$145,900

### Royal LePage Advance Realty Ltd (250)949-7231

**Bruce Ross** - bruceross@royallepage.ca  
**Sarah Baron** - sarahdbaron@gmail.com

**Johan Olsen** - Johan.Olsen@royallepage.ca  
**Melanie McRann** - melanie\_mcrann@hotmail.com

## *FOR RENT*

- \*Fully equipped kitchenettes    \*Large dining/living rooms
- \*Private locked access - 24/7    \*Laundry facilities
- \*Private 2 bedroom suites    \*Professionally sanitized
- \*No daily rentals
- Ideal for:
- Short term rentals (not B&B) / Forestry workers



# Word Search

Find the following words.



**Christmas  
star  
sled  
merry  
December  
angel  
bell  
eggnog  
gifts**

R	C	M	W	E	L	M	W	W	S
J	E	H	E	E	Z	S	C	A	N
U	C	B	G	R	T	K	M	G	G
K	I	N	M	A	R	T	Y	I	X
R	A	N	R	E	S	Y	F	Q	X
T	Q	J	K	I	C	T	K	B	U
L	K	P	R	P	S	E	O	Q	K
K	E	H	H	E	I	D	D	J	I
Y	C	P	Z	G	O	N	G	G	E
W	O	L	L	E	B	S	L	E	D



[www.KindergartenWorksheets4Kids.com](http://www.KindergartenWorksheets4Kids.com)