

The Village of Port Alice
RUMBLE SHEET

www.portalice.ca



June 9th & 10th!

Come be part of the action - we are looking for volunteers for the Cross-Country race Saturday & the Downhill race Sunday.

We need Volunteers to help with trail work, at check points, in the kitchen, at registration, and lots of First Aid! If you would like to be a part of this exciting weekend please contact Tanya at the Community Centre 250 284-3912 or email pacc@cablerocket.com.

**Annual Salmon BBQ - Saturday, June 9th @ 5pm
Only \$9 a plate! Tickets available at the BBQ!**

Are you interested in tutoring adults? Do you need help with upgrading or other literacy goals?

The Mount Waddington Family Literacy Society is recruiting volunteer tutors to work with adult learners. The tutors will receive training including provincial literacy benchmarks and assessments for academic upgrading. The learners will receive support one on one for academic tutoring or in a group setting for initiatives such as Drive Smart.

For more information please contact 902-9416.

The 2012 Annual Quatsino Fishing Derby is regrettably cancelled



VILLAGE NOTICE

PLEASE BE ADVISED THAT WATERING RESTRICTIONS FOR GARDEN & LAWN WATERING ARE AS FOLLOWS:

ODD # HOUSES CAN WATER ON ODD # DAYS

EVEN # HOUSES CAN WATER ON EVEN # DAYS

**RESTRICTIONS ARE IN EFFECT
JUNE 1ST to SEPTEMBER 30th**



Village Council Meetings

June Council Meetings will be held June 6th and June 20th at the Village Council Chambers at 7:00pm. If you have questions relating to matters on the agenda, there is a 'question period' at the end of each meeting. If there is an issue that you wish Council to consider and would like 'delegate status', please submit a letter of request. The deadline is Thursday at 5:00pm prior to the next Wednesday meeting.

Mayor:

Jan Allen 284-3201

Councillors:

Marc Brackett 284-3322
Janice MacLeod 284-6613
Scott Roberts 209-2767
Dave Stewart 284-0191

Important Local Phone Numbers

ANY EMERGENCY 911
RCMP-non emergency 284-3353
Doctors Clinic 284-3555
Health Centre 284-3555
School 284-3315
Municipal Office 284-3391
Community Cnt 284-3912
Arena 284-3943
Public Works 284-6612

BC Road Conditions
1-800-661-2324
Wildlife
1-877-952-7277

(If you see a cougar/bear in town also call the RCMP 284-3353)

Recycling News...

INDUSTRY PRODUCT STEWARDSHIP

Product stewardship is an environmental management strategy guided by the principle that whoever designs, produces, sells, or uses a product takes responsibility for minimizing that product's environmental impact.

By diverting recyclable materials from the landfill, we can reduce the need to develop new landfill sites. Many day-to-day products can be harmful when they reach end-of-life; they may be corrosive, toxic, or flammable. The Stewardship Agencies of B.C. (SABC) have committed to recycling their products safely and responsibly. By returning your products to the appropriate collection sites, you can guarantee a safe and responsible recycling process.

PRODUCTS THAT FALL UNDER PRODUCT STEWARDSHIP:

Beverage containers

Beer containers

Electronics

Cell phones

Small appliances

Fluorescent lights and tubes

Thermostats

Batteries

Used lubricating oil, filters, containers, and antifreeze

Tires

Paints, solvents, pesticides, and gasoline

Medications

Except for medications, all of the above are accepted, free of charge, at the Regional District's 7 Mile Site. Unused and outdated medications can be returned to your pharmacy. When you purchase some of these products you are charged an environmental fee or what we commonly call the green tax. **KEEP THESE PRODUCTS OUT OF YOUR TRASH!** Visit the Municipal Transfer Station to find out what is accepted in Port Alice.

The Recycling Council of B.C. has a "hotline" to answer any questions you may have 1-800-667-4321. They have developed Recyclepedia, an online resource, that allows you to find locations where you can recycle certain materials rbc.bc.ca/recyclepedia.

**THE AGM FOR THE RECYCLING SOCIETY
WILL BE HELD THURSDAY, JUNE 14TH AT 7PM
IN THE COUNCIL CHAMBERS @ MUNICIPAL HALL.
EVERYONE ENCOURAGED TO ATTEND.**



Community Centre News

Check out the Updated Community Centre schedule!

Open Monday-Fridays 2:00pm-9:00pm and Saturdays 1:00-9:00pm.

Recreation staff would love to hear from you - what would you like to try? Do you have a skill to offer? Drop in and share your ideas!

A full Schedule is on Page 6

FRIDAY FUN!

June 1 - Open Gym! 5:30-8:00pm

June 8 - Open Gym! 5:30-8:00pm

June 15 - Remote Control Chaos! 6:00-8:00pm, tracks set up inside and outside.

June 22 - Games Night! 5:30-8:00pm
Open Gym & Board games.

June 29 - School's Out Party! 5:30-8:00pm \$5.00 each includes dinner, snack and drink. Variety of activities to celebrate the start of SUMMER VACATION!

ADULT OPEN GYM

Thursdays 8:00-9:00pm

Volleyball, basketball, floor hockey - your choice!

No Cost!



TOT TiMES!

Monday - 2:00-3:15pm

Friday - 9:00-11:30am

Here's your chance to have the gym to yourselves! Parent Supervised playtime!

50+ Outdoor Adventure **Quatse Salmon Centre**

June 14, 2012

Only \$2.00 per person!

Meeting at the Com. Centre at 10am

Please sign up at the Village Office or Community Centre so we know how many people are coming.

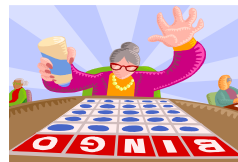
www.thesalmoncentre.org

BINGO BINGO BINGO BINGO

June 12th 7:00-9:00pm

All adults are invited!

Come out for an enjoyable night of Bingo dabbing and prize winning!



Only \$5.00 per person
Coffee will be on!

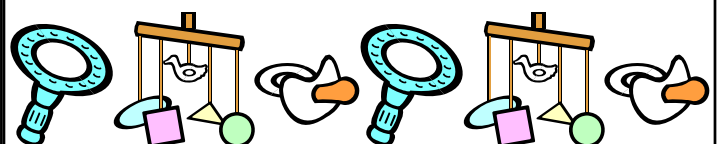
Baby Brigade!

Need a chance to talk to an adult! Bring your bundle of joy to the Community Centre to visit with other parents and moms-to-be!

Thursdays 2:30-3:30pm

In the Boardroom

Coffee and Tea will be served - and siblings are welcome to come too!



ROLLER HOCKEY

Thursdays

6:00-8:30pm

Full Gear Required

Grade 6 & up

Stay in shape for hockey season!!

No cost - bring a friend!



FLOOR HOCKEY IN THE ARENA

Tuesdays

6:00-8:30pm

Grade 6 & up

Sticks provided, but you may bring your own sticks!



Springtime Fun!

Softball!

Ball season has begun!

All Ages Softball

Wednesdays 6:00-7:30pm

@ Sea View Ball Field

Bring your whole family for a fun night of softball. Bring your gloves and staff will bring the rest!

If you do not have a ball glove please let staff know and we can arrange to have one available

SOCCER

Mondays

Seaview School Field

Family Soccer 6:00-7:00pm

Adults and Teens 7:00-8:30pm

Sign out a ball at the Community Centre - please note there will be no supervisor on the field.



June 2012

Sun	Mon	Tue	Wed	Thu	Fri	Sat
					9-11:30am Tot Time 2-9pm Adult Computer Time 2-4pm After School Program 5:30-8pm Friday Fun! 8-9:00pm Teen Open Gym	2 1-9pm Computer & Coffee Time 2-7pm Open Gym 7-9pm Teen Open Gym
3	4 2:00pm Adult Coffee & Computer Time 2-3:15pm Tot Time 3:15-4:30pm Arts & Activities 5:30-9pm Open Gym 6:45-8pm - Yoga	5 2-5pm - Adult Coffee & Computer Time 2:30pm - Adult Wii Bowling 6-7:30pm - Open Gym 7:30-9pm - Badminton 6-8:30pm - 12+ Floor Hockey in Arena 6-9:00pm Teen Drop-in	6 2pm - Adult Coffee & Computer Time 2-3:30pm - Time Out for Parents! 5:30-6:30pm Family Open Gym 6:30-8pm - Open Gym 6:45-8pm - Yoga 8-9:00pm - Teen Open Gym	7 2pm - Adult Coffee & Computer Time 2:30-3:30pm Baby Brigade! 6-9:00pm Teen Drop-in 6-7:30pm Open Gym 6-8:30pm 12+ Floor Hockey in Arena 8-9:00pm Adult Open Gym	8 9-11:30am Tot Time 2-9pm Adult Computer Time 2-4pm After School Program 5:30-8pm Friday Fun! 8-9:00pm Teen Open	9 RUMBLEFEST XC BIKE RACE! 5:00pm Salmon BBQ @ the Arena
10	RUMBLEFEST DOWNHILL BIKE RACE! 11 2:00pm Adult Coffee & Computer Time 2-3:15pm Tot Time 3:15-4:30pm Arts & Activities 5:30-9pm Open Gym 6:45-8pm - Yoga	12 2-5pm - Adult Coffee & Computer Time 2:30pm - Adult Wii Bowling 6-7:30pm - Open Gym 7:30-9pm - Badminton 6-8:30pm - 12+ Floor Hockey in Arena 6-9:00pm Teen Drop-in	13 2pm - Adult Coffee & Computer Time 2-3:30pm - Time Out for Parents! 5:30-6:30pm Family Open Gym 6:30-8pm - Open Gym 6:45-8pm - Yoga 8-9:00pm - Teen Open Gym	14 2pm - Adult Coffee & Computer Time 2:30-3:30pm Baby Brigade! 6-9:00pm Teen Drop-in 6-7:30pm Open Gym 6-8:30pm 12+ Floor Hockey in Arena 8-9:00pm Adult Open Gym	15 9-11:30am Tot Time 2-9pm Adult Computer Time 2-4pm After School Program 5:30-8pm Friday Fun! 8-9:00pm Teen Open	16 1-9pm Computer & Coffee Time 2-7pm Open Gym 7-9pm Teen Open Gym
17	18 2:00pm Adult Coffee & Computer Time 2-3:15pm Tot Time 3:15-4:30pm Arts & Activities 5:30-9pm Open Gym 6:45-8pm - Yoga	19 2-5pm - Adult Coffee & Computer Time 2:30pm - Adult Wii Bowling 6-7:30pm - Open Gym 7:30-9pm - Badminton 6-8:30pm - 12+ Floor Hockey in Arena 6-9:00pm Teen Drop-in	20 2pm - Adult Coffee & Computer Time 2-3:30pm - Time Out for Parents! 5:30-6:30pm Family Open Gym 6:30-8pm - Open Gym 6:45-8pm - Yoga 8-9:00pm - Teen Open Gym	21 2pm - Adult Coffee & Computer Time 2:30-3:30pm Baby Brigade! 6-9:00pm Teen Drop-in 6-7:30pm Open Gym 6-8:30pm 12+ Floor Hockey in Arena 8-9:00pm Adult Open Gym	22 9-11:30am Tot Time 2-9pm Adult Computer Time 2-4pm After School Program 5:30-8pm Friday Fun! 8-9:00pm Teen Open	23 1-9pm Computer & Coffee Time 2-7pm Open Gym 7-9pm Teen Open Gym
24	25 2:00pm Adult Coffee & Computer Time 2-3:15pm Tot Time 3:15-4:30pm Arts & Activities 5:30-9pm Open Gym 6:45-8pm - Yoga	26 2-5pm - Adult Coffee & Computer Time 2:30pm - Adult Wii Bowling 6-7:30pm - Open Gym 7:30-9pm - Badminton 6-8:30pm - 12+ Floor Hockey in Arena 6-9:00pm Teen Drop-in	27 2pm - Adult Coffee & Computer Time 2-3:30pm - Time Out for Parents! 5:30-6:30pm Family Open Gym 6:30-8pm - Open Gym 6:45-8pm - Yoga 8-9:00pm - Teen Open Gym	28 2pm - Adult Coffee & Computer Time 2:30-3:30pm Baby Brigade! 6-9:00pm Teen Drop-in 6-7:30pm Open Gym 6-8:30pm 12+ Floor Hockey in Arena 8-9:00pm Adult Open Gym	29 9-11:30am Tot Time 2-9pm Adult Computer Time 2-4pm After School Program 5:30-8pm Friday Fun! 8-9:00pm Teen Open	30 1-9pm Computer & Coffee Time 2-7pm Open Gym 7-9pm Teen Open Gym

Community Health Information

NOW HIRING

**Make a difference, apply today
The BC Ambulance Service needs YOU!**

Take action and be a leader in your community. BCAS is currently recruiting across Vancouver Island for community members who want an opportunity to provide a vital service and make a positive difference to the lives of others.

For more information or to download an application package visit www.bcas.ca and select Emergency Medical Responders from the careers page or contact us by phone at 1-877-577-2227, by fax at (250) 952-5970 or email us at HLTH.BCASrecruitment@gov.bc.ca.

Emergency Medical Responder training may be provided to those qualified.

Send your applications to:

**BC Ambulance Service
Human Resources - Vancouver Island
PO Box 9601, Stn Prov Govt
3300 Douglas Street
Victoria, BC V8W 9P1**

**Questions or concerns? Call
Chandra Hovde at 250 284-3590.**

Medical Transportation

Drivers are available and will volunteer their time if rides to Port McNeill or Port Hardy for **medical appointments** are needed. Reimbursement for expenses is appreciated.

24 Hours advance notice is preferred, but in the case of unforeseen emergencies we will try to meet your needs.

If you need a ride to the local health clinic please give us a call.

Travelling to Port Hardy or Port McNeill? If you are willing to offer a ride please let us know.

Contact 250 284-6109 or 250 284-3216

We Need More Volunteer Drivers – you must have a drivers abstract (available from any ICBC outlet) and be fully insured.

Do You Need a Ride?

Cancer patients needing rides to appointments call John Harris – the CSS Driver Coordinator in Port Hardy. Phone 250 949-7874.

People needing rides for non-emergency medical appointments down island may call the **Wheels for Wellness Society**. This society offers free transportation to and from appointments. These rides are offered for distances exceeding 75 km only.

It is hoped to further expand this service in the future. Donations towards expenses are welcome but not required. Pick up for Port Alice is at the Beaver Lake cut-off. For more info call Don Buchner at 250-338-0196

Public Health Clinic

Please call 250-284-3555 for an appointment
Baby Clinics are 2:30-3:30pm

Port Alice Health Centre

Located at 1090 Marine Drive is open 7 days a week from 8:30 – 4:30. A nurse is on duty during these times
250-284-3555

Mental Health Clinic

Held weekly at the Port Alice Health Centre, by doctor or self-referral
Contact 250 902-6051 to set up an appointment time.

Infant Development Program

When your baby needs extra help

Phone 250-949-8333 (**Ask for IDP**)

Email reception@niccs.org

Employee & Family Assistance Pro./Assess. & Resource Service. Our services are here to support you.

If you need us do not hesitate to call

1-250-956-3144

North Island Counselling Services

Mental Health & Alcohol/Drug

Email: mentalh@island.net

250 949-8611

NI Assessment & Referral

Email: hopeful@island.net

250 949-3144

NI Community Services

Email: nicsbc@telus.net

250 956-3134

NI Crisis & Counselling

Email: reception@niccs.org

Crisis Line: 250 949-6033

250 949-8333



Community Information

Port Alice Thrift Shop

Tues, Thurs & Sat
10:00 am – 2:00 pm

Located at Sea View Activity Centre.
(Parking Lot off Centennial Field Rd)

**Please ensure that items being dropped off
are clean and in good condition**

Thank you for your donations

Attention Senior Residents, or people in our Community needing help

Many people in our community are willing to help seniors or people with disabilities with assorted tasks and services. A list of service providers is now available and can be picked up at;

**The Library; The Legion; The Senior's
Activity Centre; The Port Alice Health
Centre**

Contact me if you would like one delivered to your home.

For further information or if you have any questions please call me, Maggie Flostrand - phone 250 284-3591

To reach the Port Alice Health Clinic
call 250 284-3555

Line 1 to reach the nurses station,
Line 2 to reach the urgent after hours,
Line 3 to reach the doctor's office



Village of Port Alice

**Thank you for picking up after
your dog!**



Port Alice Branch open

Tuesday, Wednesday,
Thursday

2-4pm & 7-9pm

LADIES COFFEEHOUSE

Thursdays 9:30-Noon

In the Oceanview Church basement
(White church!)

Meet new friends, enjoy visiting old ones!
Everyone is welcome!

Ocean View Christian Assembly

Services every Sunday

10:30am

(250) 284-3522

Community Information Cont.....

ROYAL CANADIAN LEGION, BRANCH 180

HOURS Monday to Friday 2 pm – closing time, Saturday & Sunday 1 pm – closing time. Off-sales close at 11:00 pm. Hours will change accordingly for special events or functions. Planning a party or function? Our facilities are available. If you are planning a party or a function the Legion will supply a DD for you. Please call 250 284-3256.

Our lottery games have expanded - we have it all now!

649, BC49, Keno, Pacific Poker, all the sports action, 50/50. Come to the Legion and try your luck!

We support the community with bursaries, assistance to the sick and elderly, or those in need, and donations to various events and organizations in town.

The Royal Canadian Legion Branch 180 Ladies Auxiliary

Monthly General meeting dates have changed to the 3rd Sunday of the month starting at 12:30 pm at the branch. The executive will meet prior to the meeting to compose the agenda. Organizations requesting funding or assistance should have those letters arrive before the meeting dates.

Thank you for your support.

Port Alice Lions Club

We are a non-profit organization which helps out our community and all those that live here. Are you looking for something to do during the winter? Would you like to help out your community?

We are always looking for new members to join our team. For further information please call Audie Tamburini at 284-6663 or Teresa Cliff at 250 284-6630.

Please think about it and give us a call.

PORT ALICE LIONS CLUB USED EYE GLASSES AND HEARING AIDS RECYCLE FOR SIGHT AND HEARING PROGRAM

The Port Alice Lions Club is collecting used eye glasses – lenses, frames, or both, and used hearing aids. These are refurbished and sent to third world countries for distribution, by opticians, to people in need who are unable to afford to buy these items. Collection boxes are located in the Village Office and FP Foods. For further information, contact Audie Tamburini at 250 284-6663
Thank You.

Your unwanted glasses and hearing aids will help someone to see and hear better.

Marble River Salmon Enhancement Society

Volunteers are welcome to join us. Call Lyle or Maggie at 250-284-3591 for more information.

FUNDRAISER - FOR SALE

Wooden Planters – eight sided, Stainless steel screws and banding, Preservative treated – 16” high and 16” wide

Will last over 10 years!

Price - \$40.00 each

Call Lyle or Maggie at 250 284-3591

Community Advertising



F.P. Foods Ltd.
(250) 284-3525

Full Service Supermarket
 Fresh Meat Department – Produce
 Department – In Store Bakery

Deli – featuring Quality Sliced Meats & Cheeses,
 Take-out Chicken, Soft Ice Cream, “Super Subs”

Sporting Goods

Mon to Fri 10:00am-7:00pm
 Sat & Sun 10:00am- 6:00pm

Maple Ridge Chrysler Jeep Dodge
 Jordan Allen
 Sales & Leasing Associate

Cell: 604-992-6221
 Fax: 604-465-6259
 Email: sales@mapleridgechrysler.com
 Local or Toll Free:
 1-877-465-8931

Rumble Beach Falling

For all your tree removal needs, pruning,
 topping, limbing, Residential or Business


Certified Faller –
 25 years
 Experience

On call for Village of Port Alice
Regan Hickling
250-284-6204

**TODAY IS A GOOD DAY
 TO PROTECT YOUR MORTGAGE**

Because your home is more than just where you live. Know your options.

Doug Brown
 250-956-2544
 #78-1705 Campbell Way
 Port McNeill BC V0N 2R0



© Sun Life Assurance Company of Canada, 2012.

**CARDIO/STRENGTH
 CLASSES**

“fast fit”

(Hydraulic Circuit Training Equipment)

*GOT 30 MIN. IN YOUR DAY FOR A **FULL BODY** WORKOUT?
 THEN THIS IS FOR YOU!*

LOCATION: Seaview Activity Centre
MORNING CLASSES IN THE WORKS – CALL FOR DETAIL

MONDAY, TUESDAY, WEDNESDAY, THURSDAY
 4:00 – 4:30 PM

MONDAY, WEDNESDAY & FRIDAY
 1:00 – 1:30 PM

EVENING CLASSES BY PRE-APPOINTMENT ONLY
 COST: \$4.00 DROP-IN
 \$30.00 – 15 SESSION PASS

YOUR FIRST 5 CLASSES ARE FREE!
 (JUST TO SEE IF THIS IS RIGHT FOR YOU)
 For more information call Michelle Reimer @ 284-3503

**Ramzi’s Tech Support
 Computer Repair**

Call 250 284-3437
 Or 250 209-2649




**Rain Forest Esthetics
 ‘A little Day Spa’**

Christine Weber Gibson
 Licensed Esthetician

1006 Matsqui Ave
 250-284-0023
 mzcris@telus.net

Community Advertising Cont.....



Mini Excavator w/operator and dumping 5 ton trailer.

Serving Port Alice, Port Hardy, Port McNeill and surrounding areas.

Low impact travel on grass or roadways due to its rubber tracks. Undercarriage retracts to just under 39" to fit through most garden gates and access hard to get at jobs.

Available for:

Trenching - Foundation inspection - Drain Tile replacement and foundation coating - Prep Grading and Concrete work - rock and stone placement - Trail building & Maintenance - Stump removal - Footings - Septic tanks and field installations.

Anything you don't want to shovel by hand

Aaron Neely
PH 250 209-6318

PORT ALICE
PETROLEUM PRODUCTS

For all of your fuel and fishing tackle needs. We deliver marine fuel by appointment.

Please call 250 284-3530

Mon-Sat 8am-6pm
Closed Sun & Holidays

- Gas
- Diesel
- Marked Midgrade
- Propane
- Fishing Tackle & Bait
- Confectionary
- Local Artisans
- Souvenirs

Rumble Beach Fishing Charters & Sightseeing Tours

Regan Hickling –
30 years
experience in local waters
250 284-6204 or 250 209-2779

Tires and Treads
Tires Sales and Repair

Kelly Russell
250 284-0023
1006 Matsqui Ave.
Mon - Fri 4:00pm-9:00pm
Sat - Sun Sometimes

Ocean View Restaurant
(at Ozzieland)

Enjoy daily homemade soup and sandwich specials.

Hours - **Tuesday-Saturday**
11-2:30 pm & 4:30-7 pm

Eat in or Take out
250 284-3422

RV Sites available - call 284-3422 for info

Claire Trevena, MLA
(North Island)

Room 7, Robert Scott School
6855 Market St Box 2479
Port Hardy V0N 2P0
Phone: 250-949-9473 or
1 866 387-5100
Fax: 250-949-9403

HOURS: Wednesday & Thursday 11am-3pm

Email:
claire.trevena.mla@leg.bc.ca
www.clairetrevena.ca

Ocean Myst
Massage

Have table will travel right to your home!

Comes to Port Alice once a month

Call
250 668-0163
To book an appointment

CLASSIFIED ADS

Strata For Sale

2 bedroom, 1 1/2 bathrooms, new floor, appliances and much more

#40 Clark Drive

\$111,000

Call 250 949-6319 for more info

Strata for Sale

#74 McKay Crescent

3 Bed \ 2 1/2 Baths

This is one of the biggest Strata's in town. Sunroom, Private Courtyard fenced, Small garden off of kitchen. No carpets, New kitchen, furnace & gas stove.

Well worth a look - well priced.

Phone @ 250 230-7185 or 250 594-7374

More details @ forsalebyowner.ca

Townhouse for Rent

3 Bdrm

Call Michael 250 428-9028

Studio Condo Rental

LARGE Ocean View End Unit Studio Condo

AVAILABLE Nightly, Weekly, and Monthly

Fully Furnished with Private Entry

Ocean View Living Room and Bedroom, New Full size Eat-In Kitchen with Quatsino Views. Full size Bathroom, New Floors throughout, 2 Outdoor Landings with views, Great for BBQ. Covered Carport and Outdoor Swimming Pool.

Non Smoking.

Call 250 284-3434 to view

Townhouse for Sale

For sale 3 bedroom, 1 1/2 bathroom townhouse. Covered carport and pool on premises. Call Anne at 780-916-5344.

Townhouse for Rent

For Rent, 3 bedroom, 1 1/2 bathroom townhouse in Port Alice. Covered carport and pool. Call Anne at 780-916-5344.

FOR SALE OR RENT

Forest Grove Condos

Blow Out Price - \$69,900!

Furnished and Unfurnished Rentals available by the day, week or month.

Comprehensive rental management services available.

Call Lyle today 250-284-6323

blair.verbin@shaw.ca

www.forestgrovecondos.com

ACT NOW! Only 4 units left!



<p>1037 Matsqui Ave. MLS: #262825 – Single Family 3 Bed / 2 Bath - 1,956 sq.ft. This property has some of the nicest plants in the gardens both front and back. Two bathrooms eat-in kitchen, plus dining room. This house is sound and will bring out the interior decorator in you! Take advantage of this well priced home! Backyard glass greenhouse and a work shed.</p> <p>\$184,900 Phone: 250 949-7231 www.hardyrealty.ca</p>	<p>103-801 Marine Dr MLS #300703 - Condo 2 Bed / 1 Bath - 723 Sq. Ft.</p> <p>Inlet view. New Fixtures and Tiles! You must see this completely redone walk-out ground level suite, move in ready for your quiet get –away! Has new roof.</p> <p>\$62,900 Phone: 250 949-7231 www.hardyrealty.ca</p>
<p>510 Industrial Way MLS: #330050</p> <p>Zoned Light Industrial 1/2 Acre Ocean View property with newer 936 sq ft. cement foundation shop. Vinyl siding, soffits & 200 amp service. Water & Sewer to lot line.</p> <p>Price Reduced! \$209,000 Phone 250 949-7231 www.hardyrealty.ca</p>	<p>1206 Matsqui Ave. MLS# 306489 2 Br / 2 bath - room for more - 1944 sq. ft</p> <p>Roof replaced 2010 - Nice inlet views - Wrap around deck - Enclosed garage. Would make a wonderful family home! Corner Lot - Quiet area!</p> <p>\$198,000 Phone 250 949-7231 www.hardyrealty.ca</p>
<p>302-791 MARINE DRIVE MISTY MANOR MLS: #274439 - Condo 2 Bed / 1 Bath - 843 sq.ft. Building has new roof!</p> <p>This beautiful, well maintained, updated unit has a great view of the inlet, and mountains. Permanent living or that vacation hide-a-way “dream come true”, and can come furnished!! Fishing, surfing, relaxing, hiking, boating, hunting, and the list goes on!</p> <p>\$69,900 Call today @ 250 949-7231 www.hardyrealty.ca</p>	<p>305-791 Marine Drive MISTY MANOR MLS: #283945 - Condo</p> <p>1 Bed / 1 Bath - 667 sq.ft. This is the ideal spot to call home! New roof installed, and the bathroom has been re-done. Your mortgage payment will be way less than renting. Act fast so you don't miss out! Make an offer!</p> <p>\$43,000 Call now! @ 250 949-7231 www.hardyrealty.ca</p>
<p>800 Marine Drive MLS: #239495 – Lot An absolutely beautiful oceanfront lot for that dream home! Neighbouring lots have very nice homes. Vacationers and retired people love the area for all it has to offer in the way of outdoor recreation! This lot is the only one available, so act fast! Vendor will consider all reasonable offers!</p> <p>OFFERS! Phone: 250 949-7231 www.hardyrealty.ca</p>	<p>1076 Matsqui Ave. MLS: #330039 Ocean & Mountain views! 2,088 sq ft. 4 Bdrms, 2 Baths. Large family kitchen. Single garage plus full woodworking shop. Newer propane furnace & hot water tank.</p> <p>\$219,500 Phone: 250 949-7231 www.hardyrealty.ca</p>
<p>1007 Maquinna MLS#299193 - Townhouse 3 Bed / 1 Bath - 1452 Sq. Ft</p> <p>Nice, clean basic accommodation! Covered parking, Off-street driveway includes 4 existing appliances. Visible water view from patio. Owner says sell!</p> <p>\$84,000 Phone: 250 949-7231 www.hardyrealty.ca</p>	<p>93 McKay Cres MSL: #330061</p> <p>Clean, fully furnished townhouse. 3 Bdrms & 1.5 baths. Upgrades include - laminate flooring, kitchen countertops, living room blinds, paint etc. Fully fenced/back patio.</p> <p>Price Reduced! \$120,000 Phone: 250 949-7231 www.hardyrealty.ca</p>

76 McKay Cres

MLS#303245

3 Bed / 2 Bath - 1800Sq. Ft

This is a gorgeous end unit next to the trees with a view of the inlet! Completely updated and move in ready! Comes Beautifully furnished!

\$149,900

Phone: 250 949-7231

www.hardyrealty.ca

94 McKay Cres

MLS #291580 - Townhouse

3 Bed / 1 1/2 Bath - 1680 sq. ft.

A beautifully updated tri-level end unit with a very nice fenced garden and even a glimpse of the inlet. Extra large deck of living room gives you another space to sun or entertain. Entire lower floor hobby / study area. View it soon!

\$146,000

Phone @ 250 949-7231

www.hardyrealty.ca

1181 Maquinna Terrace

MLS# 312476

4 Bed / 3 Bath - 2440 Sq. Ft

Awesome Kitchen! Pool Table included - amazing view from patio & sundeck - must be seen to be appreciated!

\$274,900

Phone: 250 949-7231

www.hardyrealty.ca

1038 Rupert Ave

MLS# 16080

4 Bed / 2 Full Bath

You must see this home and admire the updates! Owners have relocated and didn't have time to finish the whole property but that lets you put your stamp on it! Come and view and then try your offer!

\$180,000

Phone @ 250 949-7231

www.hardyrealty.ca

102 - 801 Marine Dr

MLS# 296735 - Condo

3 Bed / 1 Bath - 951 Sq. Ft

Just park your car & walk into your ground level suite. Your cabin to relax in, minutes walk to inlet.

\$89,000

Phone: 250 949-7231

www.hardyrealty.ca

965 Haida

MLS# 311188

4 Bed / 2 Bath - 2548 Sq. Ft

This is a very nicely updated family home - newer roof, hardwood, tile & carpet.

\$194,900

Phone: 250 949-7231

www.hardyrealty.ca

#63 Clark Dr

MLS# 325279 - Condo

3 Bed / 2 Bath - 2000 Sq. Ft

Oceanview, many upgrades, New propane furnace, Pellet Stove downstairs. Lots of storage and extra parking.

\$125,000

Phone: 250 949-7231

www.hardyrealty.ca

101 Haida

MLS# 326404

3 Bed / 1 Bath

End Unit - Private

Huge Deck - New Roof & New Siding - Must Buy!

\$89,900

Phone: 250 949-7231

www.hardyrealty.ca

#211-801 Marine Dr.

MLS# 327301

2 Bed / 1 Bath - Ocean View Unit

Very Clean and ready to move right in. New carpeting and Hot Water tank in 2011. Great seasonal or permanent home.

\$64,900

Phone: 250 949-7231

www.hardyrealty.ca

52 Clark

MLS# 331762

3 Bdrm / 2 Bath - 2060 sq ft

This lovely ocean view unit is fully furnished right down to the plates and silverware! Includes a woodstove and newer propane furnace.

Great Price \$119,000 and open to offers!

Phone: 250 949-7231

www.hardyrealty.ca

1220 Marine Drive
MLS# 332410
3 Bed / 1.5 Bath with provisions for a 3rd bath - **2444 Sq. Ft**
 Walk on Waterfront with fantastic views of the inlet and Islands! Priced well below other ocean front homes. Electric Baseboard heating with woodstove and fireplace for back up. Huge downstairs workshop in the unfinished basement. Bring your ideas and make this your dream home!
\$362,900
 Phone: 250 949-7231 www.hardyrealty.ca

#47 - 1191 Marine Dr
MLS# 331985
2 Bed / 2 Full Bath - 924 Sq. Ft
 Just 6 years old, with open floor plan, electric forced air heating, skylights, lots of parking for motor home, boat etc. A must see!
\$106,900
 Phone: 250 949-7231 www.hardyrealty.ca

905 Maquinna Ave
MLS# 331637
3 Bed / 1 Bath
 Beautiful tile work throughout main level - nice water view from patio - there is a blank canvas. You design opportunity!
\$58,000
 Phone: 250 949-7231 www.hardyrealty.ca

790 Marine Dr
MLS# 331053
4 Bed / 3 Bath
 Waterfront with expansive deck & patio areas! Open living area, double garage, extra concrete parking for RV or Boat. View today!
\$399,000
 Phone: 250 949-7231 www.hardyrealty.ca



Rumble Sheet Advertising Rates

Classified Ads	\$2.00/issue	½ page	\$16.00/issue
Business Card Size	\$4.00/issue	Full page	\$32.00/issue
¼ page	\$8.00/issue		

9						1		
7	2	3				8		
		4		8	9	2		3
2			9			5		
		8		3		6		
	5	1			8		4	2
5			3	9	7			
8	3			4	6			
	4							2

MEDIUM



Village of Port Alice



Scan this code with your mobile device to connect to the Portalice.ca website where you can find more information about Village programs & services, Port Alice businesses, emergency planning and more!

SCHOOL IS OUT!



WORD SEARCH

Find and circle all of the words from the word list below.

WORD LIST

amusement

break

diploma

family

friends

fun

graduation

happy

holiday

recreation

relaxation

summer

sunshine

vacation

H	H	A	J	S	U	Y	W	I	W	Q	M	X	W	T
H	R	R	J	C	L	V	K	G	E	S	Y	N	Z	N
Y	L	E	V	I	D	V	A	C	A	T	I	O	N	F
F	E	L	M	Y	I	H	S	U	N	S	H	I	N	E
R	C	A	H	O	P	A	A	D	H	U	E	L	J	A
I	F	X	O	U	L	P	M	N	J	K	K	G	T	M
E	E	A	L	R	O	P	S	X	A	Q	X	O	Y	U
N	W	T	I	M	M	Y	F	E	F	F	W	G	Q	S
D	V	I	D	J	A	Z	R	U	E	J	T	D	X	E
S	Q	O	A	P	X	B	X	X	N	C	M	G	I	M
A	U	N	Y	R	E	C	R	E	A	T	I	O	N	E
M	L	M	M	P	G	R	A	D	U	A	T	I	O	N
V	H	I	M	B	T	U	I	C	Z	F	U	S	J	T
S	Q	H	N	E	Y	E	Y	W	C	H	C	A	Z	W
H	F	N	H	F	R	Z	M	M	F	J	O	B	Q	A



Get more free activity and coloring pages @ www.theKidzpage.com

Copyright ©2011, divaDzine. All rights reserved.