

## The Village of Port Alice RUMBLE SHEET

[www.portalice.ca](http://www.portalice.ca)

### National **Emergency Preparedness Week**; May 1–7 *“Prepare Now, Learn How”*

The Village of Port Alice is participating in Emergency Preparedness Week from May 1-7 to reinforce the idea that we can reduce the risks and lessen the consequences of a disaster by being better prepared individually and as a family.

*“The Village of Port Alice has an emergency plan that would guide officials, first responders, and public safety lifeline volunteers in the event of a disaster. But it’s also important for individuals and families to prepare as well,”* says Keir Gervais, the Village’s Director of Operations and Interim Emergency Program Coordinator. *“One of the most vital steps you can take is to create a 72-hour survival kit – this will ensure you and your family can survive on your own for at least three days,”* he continues.

In addition to creating a 72-hour survival kit, the Village also encourages residents to prepare a personal survival plan for their families that incorporates special needs of family members and pets. These small but necessary steps will minimize the negative side effects of an emergency situation.

As part of the emergency preparedness public education campaign, the Village has compiled a variety of emergency preparedness information pamphlets and checklists into one package. This package contains a variety of useful information that will help individuals and families be prepared if an emergency occurs. An emergency preparedness information kiosk will be set up at Sea View Activity Centre May 2nd - Federal Voting Day - for residents to stop at and collect this package.

This year, the Village’s emergency preparedness public education campaign also includes an *emergency preparedness crossword puzzle and word search* games (back of May RumbleSheet). All residents that submit the completed word games are eligible to win one of two available 72-hour survival kits, provided by the Village and the Port Alice RCMP.

To learn more about Emergency Preparedness Week and how you can prepare for an emergency, visit the Village Municipal Office from May 2-6 to pickup free information pamphlets and view a sample 72-hour survival kit. There is also additional information inside this edition of the RumbleSheet that is intended to help guide individuals and families in their emergency preparedness efforts.

For more information about the Village of Port Alice’s emergency management and preparedness initiatives, and learn how you can become involved as a public safety lifeline volunteer, call 250-284-3391 or e-mail [director@portalice.ca](mailto:director@portalice.ca). Additional resources will also be available on the Village’s new website at [www.portalice.ca](http://www.portalice.ca), which is scheduled to be unveiled near the end of May.



### *“Prepare Now, Learn How”*

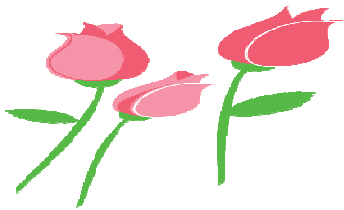
**Roses & Thorns**

**Roses** - to the Hubler family for picking up garbage around town!

**Roses** - to the Health Forum for all their hard work towards more Doctor hours!

**Roses** - to the residents making an effort to keep the community clean!

**Roses** - to the RCMP for listening to the concerns of our residents and for re-evaluating the need to make changes.



**Just a reminder to Mark your Calendar**

July 30th and 31st for the Annual Don MacLeod Memorial Golf Tournament!

Friends Food Fun & Prizes!

Watch for further announcements in June

**For info:**  
Call Janice MacLeod @ 250 284-6613

**Councillor Lloyd's Column**

(The views expressed within this article are the personal opinions of Councillor Bruce Lloyd)

We have had quite an unusual winter and spring – even for this land of often unusual and varied weather. The landslide, falling trees and roadside erosion have taxed our crew's ability to deal with it all and cost us significant time and resources. During budgeting, it became evident what the financial cost of all this has been. Some of the things we would have liked to have done, have had to be delayed. A used but well – priced Zamboni to back up our other old one, new fencing around the tennis courts, and significant additions to our sidewalk inventory were the things we had to cancel or delay to my great chagrin. However, one hopes council will have a chance to catch up on these important things at a later date.

The RCMP "withdrawal of services" threat is not over by any means. Council met with Corporal LeBrun, Staff Sergeant's Kowalewich and Mallard and began the long overdue discussions of what they would like to do given their financial pressures. The Village responded with a statement of our needs and desires and requested that the information be made available to the public and removed from In-Camera. It would seem that we have a political tussle on our hands and yet we intend to engage civilly with them in this. As for now, thanks to the public outcry, the changes are in abeyance. At this time, factual researched letters to the editor, MLA's and MPs are part of the plan. Thanks to all that did work hard on this portfolio. We intend to address the unfairness of being a relatively peaceful community which puts millions in the provincial and federal coffers but keeps getting services removed. One factor that came up was the large amount of funding most of the other regional communities receives for First Nations policing which we do not receive due to our fewer numbers of aboriginal residents. Nevertheless, our discussion with the RCMP will focus on Port Hardy sharing their manpower allotment with us in a residing policing manner rather than a removal with excursions from afar – bottom line. WE SIMPLY DESERVE NO LESS!

I recently attended the Association of Vancouver Island and Coastal Communities Convention in Sidney. At this meeting it became quite evident to me that both leading provincial parties are firmly committed now to the carbon tax which so unfairly punishes us with increased fuel, grocery and amenities costs while not making any provision for alternate transportation for remote rural residents. The angle now to fight this injustice would be for us to lobby for a tax rebate payment for those of us in genuinely underserved locales as the towns and cities have alternatives while we certainly do not. I am amazed at the transformation of British Columbia's populace from a pioneer mentality to a nanny state which is afraid of its' own shadow and thus willing to bow to any whim of a Premier who is merely a policy wonk. I fear much more of the same to come given the "urbanus ignoramus" type rhetoric emanating from "the throne" recently.

However, we were able to stem a few resolutions that called for such things as more taxes and regulations which would affect our way of life and wallets. It always amazes me to see rural communities like ours attempting to overly restrict our recovering resource industries and recommending more taxation. It's not like they are already coming at us with a million more bills and angles already.

Finally - have a good spring if it ever does arrive!



**Village Council Meetings**

May Council Meetings will be held May 11<sup>th</sup> and May 25<sup>th</sup>. Meetings are held at the Village Office at 7:00 pm and are open to the public – you are most welcome to attend. If you have questions, there is a 'question period' at the end of each meeting, for this purpose. If you have an item you wish Council to address, and would like 'delegate status', please submit a letter on or before the Friday before a meeting is to be held.

**Mayor:**

Gail Neely 284-3927

**Councillors:**

Ardie Bazinet 284-3562  
Bruce Lloyd 284-3365  
Dawn Martynyk 284-0076  
Don Vye 284-6207

**Important Local Phone Numbers**

**ANY EMERGENCY 911**  
RCMP-non emergency 284-3353  
Doctors Clinic 284-3555  
Health Centre 284-3555  
School 284-3315  
Municipal Office 284-3391  
Community Cnt 284-3912  
Arena 284-3943  
Public Works 284-6612

BC Road Conditions 1-800-661-2324  
Wildlife 1-877-952-7277  
(If you see a cougar/bear also call RCMP)

# National Emergency Preparedness Week; May 1–7

## “Prepare Now, Learn How”

Emergency Preparedness Week (EP Week) is an annual event that takes place each year during the first full week of May.

For most of us, large emergencies and disasters seem to happen to other people. But natural disasters, industrial accidents or service disruptions can happen anywhere at any time. During National Emergency Preparedness Week, all Canadians are encouraged to “get emergency ready” by knowing the risks, making a plan and preparing a kit.

The Village of Port Alice is prepared to respond to any emergency. Some of the biggest risks we face in Port Alice include landslides and debris flows, structural and interface fires, severe weather, hazardous chemical releases, marine, vehicle and air accidents, power outages, earthquakes, infectious disease outbreaks, and tsunamis.

While the Village is doing its part, residents also have a role to play. Be emergency ready:

- Prepare a plan so that you and your family know what to do in an emergency.
- Prepare an emergency kit with food, water and supplies to last at least 72 hours (three days).
- Make sure you have insurance to help protect your home and family.

It’s difficult to think clearly and logically in an emergency. Do your planning now, when you have time to be thorough. It’s easy – you might find you’re more prepared than you think.

***Preparedness...it’s everybody’s business.***



**Come be part of the action - we are looking for volunteers for the Cross-Country race Saturday & the Downhill race Sunday.**

**We need Volunteers to help with trail work, at check points, in the kitchen, at registration, and lots of First Aid! If you would like to be a part of this exciting weekend please contact Tanya at the Village Office 250 284-3391 or email [pacc@cablerocket.com](mailto:pacc@cablerocket.com).**

**Annual Salmon BBQ—Saturday, June 11th @ 5pm  
Only \$9 a plate! Tickets available soon!**

**WATCH FOR MORE DETAILS TO COME AND DON’T MISS OUT!**

# VILLAGE OF PORT ALICE 2011 SPRING CLEAN-UP

**Monday, May 16th - Friday, May 20th**

The Port Alice Public Works Department will pick up residential homeowner's debris (not including food waste) that has been separated and placed neatly on the boulevard in front of your property, beginning Monday May 16th and ending Friday May 20th. Use this opportunity to dispose of all your unwanted household & yard waste!



**All items are to be placed on the boulevard no later than Wednesday night, May 18th.**

Residents are asked to separate their waste as per the following guidelines:

- |  |  |
|--|--|
| <b>YES:</b> Metal  | <b>NO:</b> Kitchen Waste                 |
| <b>YES:</b> Wood waste (including branches 1 inch diameter or greater)       | <b>NO:</b> Ammunition                    |
| <b>YES:</b> Yard & garden waste (including branches 1 inch diameter or less) | <b>NO:</b> Hazardous Materials           |
| <b>YES:</b> Electronics  | <b>NO:</b> Oil Products                  |
| <b>YES:</b> Furniture, carpet, underlay                                      | <b>NO:</b> Commercial Construction Waste |

*Please call the Village Office at 284-3391 with any questions*

## **NOTICE TO RESIDENTS DISPOSING OF WOOD WASTE AT THE TRANSFER STATION**

**THE WOOD WASTE PILE AT THE TRANSFER STATION IS FOR WOOD WASTE ONLY.** This includes trees, branches, shrubs, construction materials, furniture, etc.

**METALS, PLASTICS, ROCKS & SOIL AND OTHER NON-WOOD PRODUCTS CANNOT BE INCLUDED WITH ANY WOOD WASTE.**

Residents are asked to remove any and all metals, such as drawer handles from furniture, hinges from doors, etc. The Village will be developing a policy to enforce this new requirement.

Port Alice is a fantastic recycling community, and we are sure residents will support this developing need. Thank you.

*Village of Port Alice*

# Seniors Dialouge

## Upcoming Events

### Potluck Dinner!

May 5, 2011

5:30pm

### Sea View Activity Centre

Learn how to personally prepare for emergencies and how not to become a victim of fraud.

Sp Guest: Cpl Michelle LeBrun

### Games Night

7pm, Mondays at Sea View Activity Centre.

Everyone is invited to this free night of cards, games and visiting!

### Outdoor Adventures

Thank you to those that participated in April's Outdoor Adventure!

### May's Outdoor Adventure

We're going to be tourists in our own back yard! Devil's Bath, Vanishing River, Kathleen Lake, and Eternal Fountain!

Friday May 20th, 11:00am at  
Community Centre Parking Lot

Bring a picnic lunch for whichever spot appeals to the group!

Sign up by Monday May 16th.

© Original Artist  
Reproduction rights obtainable from  
www.CartoonStock.com



# ElderCollege

## Port Alice Elder College

ElderCollege is designed for students who are looking for a unique community of adult learners. There are no exams, no grades, and no pressure; **it's all about learning for fun!**

Visit Port Alice Village Office to Join!

**Step One:** Join ElderCollege at the Village Office, \$10.00 annual fee

**Step Two:** Register in a class - Call Angie Wood (250) 949-7912

**Step Three:** Enjoy!

## First Course: Computers, Internet and Social Media

**When:** May 28<sup>th</sup> 2011 & June 4<sup>th</sup> 2011  
9am to 12pm (Noon)

**Where:** Sea View School Computer Lab (Upper Building)

Maximum Enrollment: 16

**Cost:** It's Free

For more information call Angie Wood  
1-866-332-1133 or (250) 949-7912

# Community Centre News

As Community Centre renovations continue please remember that...

- Open Gym and Yoga are taking place at the Sea View Gym (Little Gym)
- Mom's Morning Out will meet in the Curling Lounge, using the outside stairs

We are excited to take this opportunity to showcase other great spaces in our Community  
- watch for a variety of activities offered in the coming months!

## Open Gym - Please note changes!

Each Open Gym a variety of activities in the Sea View School Gym, supervised by the Community Centre Supervisors. All ages are welcome!

### Super Tot Open Gym - Thursdays 5:30-7:30pm

Super Tots Gym is for 5yrs and Under to have the whole gym to themselves!

### Open Gym - Fridays 6:00-8:00pm

### Softball - Wednesdays 6:00-7:30 on the School Field

## 12+ Floor Hockey!

In the Arena  
7-9pm

Bring your sticks for a night  
of floor hockey!  
Goalie Gear Provided



Adults Welcome!

## SOFTBALL!

Ball season has begun!

All Ages Softball  
Wednesdays 6:00-7:30pm  
@ Sea View Ball Field

Bring your whole family  
for a fun night of softball.  
Bring your gloves and  
staff will bring the rest!

If you do not have a ball  
glove please let staff know  
and we can arrange to  
have one available

## MINUTE to WIN It

In Port Alice!

Think it looks easy?! Here's  
your chance to prove it!

May 28th  
Sea View Activity Centre  
6:00pm

All ages welcome  
Sign up at the Village Office



# MAY 2011

Sun	Mon	Tue	Wed	Thu	Fri	Sat
<p><b>Don't Forget!</b>  <b>Mom's Morning Out</b> will be held in the Curling Club Lounge  <b>Yoga &amp; Open Gym</b> will</p>						
1	2 <b>Mom's Morning Out</b> 9:00-10:30am <b>Yoga</b> 6:45-8pm	3 <b>Drama</b> 3:15-4:00pm	4 <b>Floor Hockey</b> - Arena 7-9pm <b>Softball</b> - School Field 6-7:30pm <b>Yoga</b> 6:45-8pm	5 <b>Super Tots</b> <b>Open Gym</b> 5:30-7:30pm	6 <b>Open Gym</b> 6:00-8:00pm	7
8	9 <b>Mom's Morning Out</b> 9:00-10:30am <b>Yoga</b> 6:45-8pm	10 <b>Drama</b> 3:15-4:00pm	11 <b>Floor Hockey</b> - Arena 7-9pm <b>Softball</b> - School Field 6-7:30pm <b>Yoga</b> 6:45-8pm	12 <b>Super Tots</b> <b>Open Gym</b> 5:30-7:30pm	13 <b>Open Gym</b> 6:00-8:00pm	14
15	16 <b>Mom's Morning Out</b> 9:00-10:30am <b>Yoga</b> 6:45-8pm	17 <b>Drama</b> 3:15-4:00pm	18 <b>Floor Hockey</b> - Arena 7-9pm <b>Softball</b> - School Field 6-7:30pm <b>Yoga</b> 6:45-8pm	19 <b>Super Tots</b> <b>Open Gym</b> 5:30-7:30pm	20 <b>Open Gym</b> 6:00-8:00pm	21
22	23 <b>Closed For Victoria Day</b>	24 <b>Drama</b> 3:15-4:00pm	25 <b>Floor Hockey</b> - Arena 7-9pm <b>Softball</b> - School Field 6-7:30pm <b>Yoga</b> 6:45-8pm	26 <b>Super Tots</b> <b>Open Gym</b> 5:30-7:30pm	27 <b>Open Gym</b> 6:00-8:00pm	28 <b>Minute to Win It!</b> Sea View Activity Centre 6pm Details pg 7
29	30 <b>Mom's Morning Out</b> 9:00-10:30am <b>Yoga</b> 6:45-8pm	31				

# ACCESSING LINK RIVER CAMPGROUND

In the coming months, RDMW will be conducting some essential maintenance at Link River Regional Park that will necessitate further closures of the gate for security purposes. In addition, recent thefts of firewood and substantial investments in the infrastructure at Link River in 2010 mean that steps have to be taken to preserve public vehicle access while increasing off-season security at a location that is important for recreational tourism in the summer months.

After consultation with the Village of Port Alice, RDMW has implemented a new sign-out system for keys at both its own Port McNeill office and at the Village office. Members of the public who wish to access Link River can sign out a key at any time in exchange for a small returnable deposit and personal contact information. The keys must always be returned after use is complete and the park gate locked upon exit. These measures are not being taken to restrict public access, but to protect the investment of local taxpayers' money through the RDMW Parks service. It is our hope that this measure will satisfy all residents.



## **Defective Vehicles - A Crash Looking for a Place to Happen**

What do you do with a pickup that has only one operating light, a high beam headlight, being driven at night between towns? How about another being driven in the rain with wipers being operated by the passenger who was pushing and pulling on a rope with one end tied to each wiper and run through the passenger compartment via the vent windows? One driver even put black tape over the warning light that would have led him to discover no brake fluid in one reservoir of his master cylinder if he had investigated it.

These examples are just a few of many that I ran into over the course of my career in traffic law enforcement. It's glaringly obvious that these drivers chose to put other road users at risk. What might be less obvious is the dilemma I was in. Now that I had found them I was obligated to do something about it or I would risk liability myself if I were to let them continue.

Once your vehicle is no longer properly equipped for use on the highway you are obligated to remove it immediately. In order to take it to repair you would call a tow truck or other vehicle capable of moving the vehicle safely such as a deck truck. This is the only legal way to move a defective vehicle on the highway.

If you choose not to and are a significant hazard, police will order the vehicle removed immediately, may seize the licence plates and vehicle licence document to return to ICBC. The order will also require that you repair the vehicle and pass inspection at a designated inspection facility prior to driving the vehicle on the highway again. This is commonly known as a notice and order number one.

Constable Tim Schewe (retired)  
DriveSmartBC □ Traffic Safety in BC  
<http://www.drivesmartbc.ca>

# Cops Corner

Port Alice RCMP -

250-284-3353

Cpl Michelle LeBRUN

Cst Rory WEBB

## Community Health Information

### NOW HIRING

#### Make a difference, apply today The BC Ambulance Service needs YOU!

Take action and be a leader in your community. BCAS is currently recruiting across Vancouver Island for community members who want an opportunity to provide a vital service and make a positive difference to the lives of others.

For More information and to download an application package visit [www.bcas.ca](http://www.bcas.ca) and select Emergency Medical Responders from the careers page or contact us by phone at 1-877-577-2227, by fax at (250) 952-5970 or email us at [HLTH.BCASrecruitment@gov.bc.ca](mailto:HLTH.BCASrecruitment@gov.bc.ca).

Emergency Medical Responder training may be provide to those qualified.

*Send your applications to:*

**BC Ambulance Service**  
Human Resources—Vancouver Island  
PO Box 9601, Stn Prov Govt  
3300 Douglas Street  
Victoria, BC V8W 9P1

Questions or concerns? Call  
Chandra Hovde at 250 284-3590.

#### Port Alice Health Forum

Drivers are available and will volunteer their time if rides to Port McNeill or Port Hardy for **medical appointments** are needed. Reimbursement for expenses is appreciated.

**24 Hours advance notice is preferred, but in the case of unforeseen emergencies we will try to meet your needs.**

**If you need a ride to the local health clinic please give us a call.**

Travelling to Port Hardy or Port McNeill? If you are willing to offer a ride please let us know.

Contact 250 284-6109 or 250 284-3216

**We Need More Volunteer Drivers** – you must have a drivers abstract (available from any ICBC outlet) and be fully insured.

#### Do You Need a Ride?

**Cancer patients** needing rides to appointments call John Harris – the CSS Driver Coordinator in Port Hardy. Phone 250 949-7874.

**People needing rides for non-emergency medical appointments down island** call the **Wheels for Wellness Society**. This society offers free transportation to and from appointments. These rides are offered for distances exceeding 75 km only.

It is hoped to further expand this service in the future. Donations towards expenses are welcome but not required. Pick up for Port Alice is at the Beaver Lake Cut-off. For more info call Don Buchner at 250-338-0196

---

#### **Public Health Clinic**

*Please call 250-284-3555 for an appointment*  
Baby Clinics are 2:30-3:30pm

---

#### **Port Alice Health Centre**

Located at 1090 Marine Drive is open 7 days a week from 8:30 – 4:30. A nurse is on duty during these times  
**250-284-3555**

---

#### **Mental Health Clinic**

Held weekly at the Port Alice Health Centre, by doctor of self-referral

**Contact 250 902-6051 to set up an appointment time.**

---

#### **Infant Development Program**

**When your baby needs extra help**

Phone 250-949-8333 (**Ask for IDP**)

Email [reception@nicccs.org](mailto:reception@nicccs.org)

---

**Employee & Family Assistance Pro./Assess. & Resource Service.** Our services are here to support you. If you need us do not hesitate to call

---

#### **North Island Counseling Services**

Mental Health & Alcohol/Drug  
Email: [mentalh@island.net](mailto:mentalh@island.net)  
250 949-8611

NI Assessment & Referral  
Email: [hopeful@island.net](mailto:hopeful@island.net)  
250 949-3144

NI Community Services  
Email: [nicsbc@telus.net](mailto:nicsbc@telus.net)  
250 956-3134

NI Crisis & Counselling  
Email: [reception@nicccs.org](mailto:reception@nicccs.org)  
Crisis Line: 250 949-6033  
250 949-8333



# *Women's Wellness Fair*

**Port Alice Health Centre  
Monday, May 2, 2011  
10:00am – 3:00pm**



## **Drop-in for free:**

- ✓ Pap Screening (by appt)
- ✓ Diabetes Screening
- ✓ Massage/Relaxation
- ✓ Acupuncture
- ✓ Health Education
- ✓ Mental Health/Addictions
- ✓ Door Prizes
- ✓ And much, much, more...

**We Look forward to seeing you there!**  
To book an appointment for a Pap test call  
**250-284-3555**

## Good Health News for Port Alice

The Port Alice Health Forum is pleased to announce that the Ministry of Health has agreed to fund an additional part time (.4) physician for Port Alice.

The good news was delivered by Doug Blackie of the Vancouver Island Health Authority (VIHA) after more than two years of consultations, meetings, and cooperative efforts between the Port Alice Health Forum, VIHA, and the Village of Port Alice, R&B Falling, Western Forest Products, and Neucel Specialty Cellulose.

We are cautiously optimistic about having full time physician coverage for our community, which is the major industrial source of revenue for our provincial government from the North Island region, and the P.A. Health Forum is continuing our efforts to have lab/x-ray services available on a daily basis, instead of the one day per week that we currently receive.

It has been very challenging to have the needs of our industrial community acknowledged and met, but the safety of our workers and residents of Port Alice depends on these services being available to us. Although there is still work to be done, on behalf of the Health Forum I would like to thank everyone involved in the process so far, and encourage continued participation in our ongoing efforts to receive full time medical services in Port Alice.

Lee-Ann Watson  
Vice President, Port Alice Health Forum

To reach the **AFTER HOURS DOCTOR** on call press 1. This will take you to the **PORT MCNEILL NURSING STATION** who will then call the on call doctor.

To reach the **NURSING STATION, PRESS 2**

To reach the **DOCTOR'S CLINIC/FRONT OFFICE, PRESS 3**

### **Attention Senior Residents, or people in our Community needing help**

Many people in our community are willing to help seniors or people with disabilities with assorted tasks and services. A list of service providers is now available and can be picked up at;

**The Library; The Legion; The Senior's Activity Centre; The Port Alice Health Centre**

Contact me if you would like one delivered to your home.

Thank you to all the people who are willing to help and to those who assisted me to get this project going.

For further information or if you have any questions please call me,  
Maggie Flostrand - phone 250 284-3591

## Community News and Advertising



### F.P. Foods Ltd.

**284-3525**



Full Service Supermarket  
Fresh Meat Department – Produce  
Department – In Store Bakery

Deli – featuring Quality Sliced Meats & Cheeses,  
Take-out Chicken, Soft Ice Cream, “Super Subs”

Sporting Goods

Mon to Fri 10:00am-7:00pm Sat 10am- 6pm  
Sun 11am- 5:30pm

### Port Alice Thrift Shop

Tues, Thurs & Sat  
10:00 am – 2:00 pm

Located at Sea View Activity Centre.  
(Parking Lot off Centennial Field Rd)

**Please ensure that items being dropped off  
are clean and in good condition**

*Thank you for your donations*



### Port Alice Branch open

Tuesday, Wednesday, Thursday

2-4pm & 7-9pm  
(250) 284-3554

### Action Roofing

Courtney Philipow  
Owner

93 McKay  
Port Alice BC  
T: (250) 284-6639  
C: (250) 527-0013



### Maple Ridge Chrysler Jeep Dodge

Jordan Allen  
Sales & Leasing Associate

Cell: 604-992-6221  
Fax: 604-465-6259  
Email: [sales@mapleridgechrysler.com](mailto:sales@mapleridgechrysler.com)  
Local or Toll Free:  
1-877-465-8931

### Ocean View Christian Assembly

Rev. Caleb Zylstra, Phone: 250-284-3522

#### Services - Everyone Welcome

Sunday Worship 10:30am  
Wednesday Prayer 7:30pm

#### Jesus and Me

our structured children's program happens on  
Sundays during our 10:30am service.

**Ladies Coffeehouse – Thursdays @ 9:30am**

Movie Premiere - April 8<sup>th</sup> 2011, 6:00pm

### “The Rally”

Sea View School Gym

OVCA Youth Present

a four course fine dining experience

Silent Auction & Spaghetti Dinner

Tickets - \$15

Saturday April 16<sup>th</sup> at 5:30 pm

Call 250-902-8350 for tickets

Proceeds will go towards our historymaker trip

### Carpentry & Renovation Services

Call:  
Kjell Kristiansen  
Lore Kristiansen  
284-3956

## Community News and Advertising Cont.....

### QUATSINO CHALET IS HIRING...

#### Full Time Kitchen Helper

Job Location :

Quatsino Chalet Restaurant  
111 Nigei St. Port Alice, BC

Wage: \$9.00/hour, paid semi-monthly

Shift : 11AM-3PM, 5PM-9PM

Job Duties :

- Wash and cut vegetables and foodstuff;
- Clean kitchen and store supplies;
- Prepare ingredients for cooking as instructed by the cook;
- Prepare, cook and finish simple food items;
- Perform other duties to assist the cook;

Perform simple cooking under supervision of the cook

Board and Lodging provided

Job Nature: Permanent

Requirement: 1 or 2 years of kitchen experience

Please send resume to [ericashshum@gmail.com](mailto:ericashshum@gmail.com) or contact Erica 250 284 3338 for more info

#### Full Time Cook in Chinese & Canadian Cuisine

Job Location :

Quatsino Chalet Restaurant  
111 Nigei St. Port Alice, BC

Wage: \$14.00/ hour , paid semi-monthly

Shift: 11AM – 3 PM, 5PM – 9PM

Job Duties:

- Prepare and cook complete meals or individual dishes and foods in both Canadian and Chinese cuisine;
- Plan menus,
- Monitor and order food supplies
- Work with specialized cooking equipment such as deep fryers and wok;
- Manage kitchen operations;
- Train staff in preparation, cooking and handling of food;

Supervise kitchen staff and helper

Board and lodging provided

Job Nature: Permanent

Requirement: 1 or 2 years of cook experience

*If you get sick, you get paid.  
If you don't get sick, you get paid back.*

#### Why Life's brighter with Sun Critical Illness Insurance

- Helps pay your mortgage and other regular expenses while you take the time you need to recover.
- More control over treatment options and ongoing care, including access to services to help you through the medical maze.
- Serious illnesses do happen – but your premiums can be returned if you don't make a claim.

Today is a good day to learn more, so let's talk.

#### Doug Brown

Tel 250-956-2544

Cell 250-902-9294

Fax 250-956-4014

[doug.brown@sunlife.com](mailto:doug.brown@sunlife.com)

[www.sunlife.ca/doug.brown](http://www.sunlife.ca/doug.brown)

#7B-1705 Campbell Way, Port McNeill BC V0N 2R0



© Sun Life Assurance Company of Canada, 2011.



## Bruce's Sunrise Contractors

**-Certified Journeyman  
Carpenter-**

**Decks \* Renovations \* Roofs  
Windows \* Repairs \* Flooring**

**B. Witzel 250-209-2678**



*Multi-level Decks and Sunspaces*

## Community News and Advertising Cont.....

### **Rumble Beach Falling**

For all your tree removal needs,  
pruning, topping, limbing, Residential or  
Business

Certified Faller – 25 years  
Experience

On call for Village of Port Alice  
**Regan Hickling**  
250-284-6204

### **Rumble Beach Fishing Charters & Sightseeing Tours**

Regan Hickling –  
30 years  
experience in local  
waters

250-284-6204  
250-209-2779

### **TIRES 'N' TREADS**

Anything you need for  
tires & wheels

Tire Repair-  
Wheel Balancing-  
Tire Sales-Chains

**SCOTT SINCLAIR**

284-6248  
or 209-1974

## **PORT ALICE AVON**

Call Deb Egan  
(new rep)

**250 284-3970**

### **Castaway Marine Charters Fishing & Sightseeing**

Larry Pepper  
Fishing the  
Quatsino Sound  
since 1978

**250-284-3572**

### **Little Miss Sew & Sew**

**For all your  
sewing needs!**

**Call  
250 284-6643**

### **PORT ALICE PETROLEUM PRODUCTS**

**For all of your fuel and fishing  
tackle needs. We deliver marine  
fuel by appointment.**

**Please call 250 284-3530**

Mon-Sat 8am-6pm  
Closed Sun & Holidays

- Gas
- Diesel
- Marked Midgrade
- Propane
- Fishing Tackle & Bait
- Confectionary
- Local Artisans
- Souvenirs

### **Claire Trevena, MLA (North Island)**

7215 Market Street  
(Box 819)  
Port Hardy, VON 2P0  
Phone: 250-902-0325 or  
866-387-5100  
Fax: 250-902-0375  
Hours: Wed. & Thurs., Noon  
to 4 PM  
Email:  
[claire.trevena.mla@leg.bc.ca](mailto:claire.trevena.mla@leg.bc.ca)  
[www.clairetrevena.ca](http://www.clairetrevena.ca)

*Hannelore  
Kristiansen*



*Commissioning  
Portraits  
Landscapes  
Seascapes  
250-284-3956*

## Community News and Advertising Cont.....



Mini Excavator w/operator and dumping 5 ton trailer.

Serving Port Alice, Port Hardy, Port McNeill and surrounding areas.

Low impact travel on grass or roadways due to its rubber tracks.

Undercarriage retracts to just under 39" to fit through most garden gates and access hard to get at jobs.

Available for:

Trenching - Foundation inspection - Drain Tile replacement and foundation coating - Prep Grading and Concrete work - rock and stone placement - Trail building & Maintenance - Stump removal - Footings - Septic tanks and field installations.

Anything you don't want to shovel by hand

Aaron Neely

PH 250-209-6318

[Triport.contracting@yahoo.ca](mailto:Triport.contracting@yahoo.ca)

### Marble River Salmon Enhancement Society

Volunteers are welcome to join us. Call Lyle or Maggie at 250-284-3591 for more information.

#### FUNDRAISER - FOR SALE

**Wooden Planters** – eight sided, Stainless steel screws and banding, Preservative treated – 16" high and 16" wide

Will last over 10 years!

Price - \$40.00 each

Call Lyle or Maggie at 250 284-3591

## COLYVAN PACIFIC

**REAL ESTATE MANAGEMENT SERVICES LTD.**

**#202-5704 BALSAM ST  
VANCOUVER, BC V6M 4B9**

Catch the Wave  
Business is Great!!

### Port Alice Shopping Centre

We have a number of units of various sizes for lease. We're open for discussion

**Contact:** Colyvan Pacific  
**Ray Seymour**

Ph 250-740-1229

Toll Free 1-877-859-2225

[rseymour@colyvanpacific.com](mailto:rseymour@colyvanpacific.com)

Fax 604-683-7399

### Ocean View Restaurant (at Ozzieland)

Enjoy daily homemade soup and sandwich specials.

Hours

**Monday-Saturday**

11-2:30 pm & 4:30-7 pm

**Eat in or Take out  
250-284-3422**

**Port Alice RV Park  
Boat & Trailer Storage**

\$150 Month

\$10 Day

250-284-3422

### Ocean Myst Massage

Have table will travel right to your home!

Comes to Port Alice 2 times a month

**Call**

**250 230-0846**

## Community News and Advertising Cont.....

### Port Alice Lions Club

We are a non-profit organization which helps out our community and all those that live here. Are you looking for something to do during the winter? Would you like to help out your community? We are always looking for new members to join our team. For further information please call Audie Tamburini at 284-6663 or Teressa Cliff at 284-6630. Please think about it and give us a call.



### PORT ALICE RECYCLING SOCIETY

Monday to Friday 7:45 - 3:45pm

Tuesday 4 pm - 8 pm

Saturday 10 am - 2 pm

Sunday 2 pm - 6 pm

Please **do not put cardboard into the big blue bin** at the recycling yard.

There is a cardboard collection site at the right side of the yard.

---

### PORT ALICE LIONS CLUB USED EYE GLASSES AND HEARING AIDS RECYCLE FOR SIGHT AND HEARING PROGRAM

The Port Alice Lions Club is collecting used eye glasses – lenses, frames, or both, and used hearing aids. These are refurbished and sent to third world countries for distribution, by opticians, to people in need who are unable to afford to buy these items.

Collection boxes are located in the Village Office and FP Foods. For further information, contact Audie Tamburini at 250-284-6663

Thank You.

**Your unwanted glasses and hearing aids will help someone to see and hear better.**

---

### Port Alice Fish & Wildlife Association

Are you interested in outdoor recreation and conservation? Consider membership in Port Alice Fish & Wildlife Federation. Fee of \$30 includes membership to BC Wildlife Federation which is a province wide volunteer conservation organization representing all British Columbians whose aim is to protect, enhance, and promote wise use of the environment for the benefit of present and future generations. The Federation is BC's largest and oldest conservation organization. Check out

[www.bcwf.bc.ca](http://www.bcwf.bc.ca) Contact Jamie (250)284-3420

**\*\*CARDBOARD MUST BE FLATTENED \*\*  
BEFORE PUTTING IT IN THE DEPOT  
COLLECTION SITE.  
IT WILL NOT BE PICKED UP UNLESS IT IS  
FLATTENED**

***Regional District/Seven Mile charges an additional fee for cardboard in the garbage. Please help Port Alice keep the costs of garbage disposal down to a minimum.***

***New! If you are a shut-in or a senior without a vehicle, you can phone Cathy at 284-3215 to arrange to have your recycling picked up. Now accepting #1 to 7 plastics, including plastic bags showing the recycling symbol.***

### Battery Recycling:

- ⇒ The Depot is now accepting **both Alkaline and Rechargeable Batteries** for recycling.
- ⇒ Rechargeable batteries eligible for collection and recycling are: Nickel Cadmium (Ni-Cd), Lithium Ion (Li-ion), Nickel Metal Hydride (Ni-MH) and Small Sealed Lead (Pb).
- ⇒ Small dry cell portable rechargeable batteries are commonly found in cordless power tools, cellular and cordless phones, laptop computers, camcorders, two-way radios and remote control toys. Please help keep the outside depot clean and rodent free. Rinse your milk jugs, plastics and tins and remove any caps.

**NO GLASS please**

## ROYAL CANADIAN LEGION, BRANCH 180

**HOURS** Monday to Friday 3 pm – closing time, Saturday & Sunday 1 pm – closing time. Off-sales close at 11:00 pm. Hours will change accordingly for special events or functions. Planning a party or function? Our facilities are available. If you are planning a party or a function the Legion will supply a DD for you. Please call 250-284-3256.

### Our lottery games have expanded - we have it all now!

649, BC49, Keno, Pacific Poker, all the sports action, 50/50. Come to the Legion and try your luck!

**Monthly Meeting** – Sunday May15th, 2:00 Executive, 2:30pm General meeting.

We support the community with bursaries, assistance to the sick and elderly, or those in need, and donations to various events and organizations in town.

### The Royal Canadian Legion Branch 180 Ladies Auxiliary

Monthly General meeting dates have changed to the 3rd Sunday of the Month starting at 12:30 pm at the branch. The executive will meet prior to that meeting to compose the agenda. Organizations requesting funding or assistance should have those letters arrive before the meeting dates.

Thank you for your support.

### ROYAL CANADIAN LEGION BRANCH #180

#### Executive for 2010

President	Patsy Bailey	284-6204
Vice President	Richard W. Beckett	284-6179
		Fax 284-6686
Secretary	Cathy Beckett	284-6179
		Fax 284-6686
Treasurer	Al Goodridge	No Phone
Service Officer	Bev Johnson	284-6657
Executive	Paul Tregoning	284-3424
	Pete Mason	284-3560
	Colin Sutherland	284-0155
Sgt At Arms	Richard W. Beckett	284-6179
Membership & Ways and Means	Audrey Clark	284-3261

### “We Support our Troops”

The Legion is taking orders for items that say “We Support our Troops”

Red or Navy T-shirts - \$12.95

Ribbon Shaped Pins - \$1.95

Bumper Stickers - \$3.95

The catalogue and order form book is at the Legion.



## CLASSIFIED ADS

### For Sale

2 bedroom, 1<sup>1/2</sup> bathrooms, new floor, appliances and much more

#40 Clark Drive  
\$106,000

Call 250 949-6319 for more info

### House for Sale

1112 Maquinna Ave. Port Alice  
\$205,000.00

4 Bdrm, plus computer room  
1& 1/2 Bath, Family room with full entertainment bar.  
New carpet & paint downstairs.

Fully remodeled bathroom. Fenced yard, Hot Tub, Carport, Beautiful view. 5 Appliances  
To view or for questions contact Dave @ 284-0115 or dahall@cablerocket.com

### Apartment for Rent

Misty Manor #301-791 Marine Dr.  
1 Bedroom Furnished  
\$575.00\month Call Ray 250 216-4851

### For Rent

3 Bedroom unfurnished Townhouse for rent.  
Call 250-428-9028

### Townhouses for Rent or sale

3 Bdrm, 1 1/2 Bath  
Contact Anne Anderson 1 780-968-5344

### For Sale

2 bedroom Apartment, Renovated, new paint and carpets, Oceanview, Seaview Apts (2<sup>nd</sup> floor)

Call 250-949-9893  
Asking \$59,000

### Apartment for Rent

Semi-furnished 1 bed apartment in Misty Manor, Non-smoking, no pets, no parties. Lovely little place in nice building suitable for single or couple without children

\$550 per month call Tony or Barb at 1.250.624.3868  
email [priceajb@gmail.com](mailto:priceajb@gmail.com)

### Apartment for Rent

Forest Grove - 2 Bdrm, Oceanview, newly renovated.  
Available April 1st  
To view or for questions call Jane at 604 341-8496 or [jane@nukaria.com](mailto:jane@nukaria.com)

### For Sale...112-801 Marine Drive

3 Bedroom Apt in excellent condition, new flooring, refinished cupboards, new paint, new textured ceiling, ground floor, beautiful view of the inlet from enlarged patio

Reduced Price! \$84,900  
250-426-6486

### Ocean View Townhouse for Rent

Large ocean view end unit Townhouse  
Living Room with view deck

3 Bedrooms, huge Master Bedroom.  
Large Family Room or 4<sup>th</sup> Bedroom

With patio doors to front yard with view.

Large Kitchen with patio doors to private deck.

2 Bathrooms, Laundry Room with washer, dryer & storage.

Double carport with 1 enclosed.

Will furnish if required. Non-Smoking

Call 250 284-3434 to view

### UNFURNISHED APARTMENT FOR RENT

Available Immediately

#305-1073 Maquinna Avenue  
Forest Grove Apartments

- Very Clean 2 Bdrm upstairs unit
- Carpeted living room with wood floor dining area
- Storage Locker and Carport
- Unrestricted sea views
- Very quiet building
- \$650 per month plus utilities

For more information or to arrange a viewing please call Jane Rukaria at 604-341-8496 or email: [jane@rukaria.com](mailto:jane@rukaria.com)

## Advertising Rates

Classified Ads	\$2.00/issue
Business Card Size	\$4.00/issue
¼ page	\$8.00/issue
½ page	\$16.00/issue
Full page	\$32.00/issue

**1037 Matsqui Ave.****MLS: #262825 – Single Family****3 Bed / 2 Bath - 1,956 sq.ft.**

This property has some of the nicest plants in the gardens both front and back. Two bathrooms eat-in kitchen, plus dining room. This house is sound and will bring out the interior decorator in you! Take advantage of this well priced home! Backyard glass greenhouse and a work shed.

**\$186,900****Phone: 250-949-7231**[www.hardyrealty.ca](http://www.hardyrealty.ca)**103-801 Marine Dr****MLS #300703 - Condo****2 Bed / 1 Bath - 723 Sq. Ft.**

Inlet view. New Fixtures and Tiles! You must see this completely redone walk-out ground level suite, move in ready for your quiet get-away! Has new roof.

**\$66,900****Phone: 250-949-7231**[www.hardyrealty.ca](http://www.hardyrealty.ca)**303 - 801 Marine Drive****MLS: #304388 Condo****2 Bed / 1 Bath - 802 sq.ft.**

Ocean view front facing unit. This spacious condo comes complete with gorgeous furnishings. Included appliances; a self clean oven, convection microwave & built in upright freezer. Electrical upgraded to 100 amp service. You could call this beautiful condo home! So call today!

**\$75,900****Phone: 250-949-7231**[www.hardyrealty.ca](http://www.hardyrealty.ca)**1206 Matsqui Ave.****MLS# 306489****2 Br / 2 bath - room for more - 1944 sq. ft**

Roof replaced 2010 - Nice inlet views - Wrap around deck - Enclosed garage. Would make a wonderful family home! Corner Lot - Quiet area!

**\$209,000****Phone 250 949-7231**[www.hardyrealty.ca](http://www.hardyrealty.ca)**# 302-791 MARINE DRIVE****MISTY MANOR****MLS: #274439 - Condo****2 Bed / 1 Bath - 843 sq.ft.**

Building has new roof!

This beautiful, well maintained, updated unit has a nice view of the inlet, and mountains. Permanent living or that vacation hide-a-way "dream come true", and even comes furnished!! Fishing, surfing, relaxing, hiking, boating, hunting, and the list goes on! A ladies home with white rugs & cream leather furniture.

**\$79,800****Call today @ 250-949-7231**[www.hardyrealty.ca](http://www.hardyrealty.ca)**# 305-791 Marine Drive****MISTY MANOR****MLS: #283945 - Condo****1 Bed / 1 Bath - 667 sq.ft.**

This is the ideal spot to call home! New roof installed, and the bathroom has and been re-done. Your mortgage payment will be way less than renting. **Act fast so you don't miss out!**

**\$47,000****Call now! @ 250-949-7231**[www.hardyrealty.ca](http://www.hardyrealty.ca)**800 Marine Drive****MLS: #239495 – Lot**

An absolutely beautiful oceanfront lot for that dream home! Neighbouring lots have very nice homes. Vacationers and retired people love the area for all it has to offer in the way of outdoor recreation! This lot is the only one available, so act fast! Vendor will consider all reasonable offers!

**\$142,000****Phone: 250-949-7231**[www.hardyrealty.ca](http://www.hardyrealty.ca)**88 McKay Cres.****MLS: #268613 - Townhouse****3 Bed / 2 Bath - 1,800 sq.ft.**

Lovely updates throughout. New baths, furnace, flooring and countertops to name a few. Private little courtyard off dining area. Covered balcony off living room has a view across central park area. All the work is done, you can just move right in!

**\$125,000****Phone: 250-949-7231**[www.hardyrealty.ca](http://www.hardyrealty.ca)**1007 Maquinna****MLS#299193 - Townhouse****3 Bed / 1 Bath - 1452 Sq. Ft**

Nice, clean basic accommodation! Covered parking, Off-street driveway includes 4 existing appliances. Visible water view from patio. Owner says sell!

**\$94,000****Phone: 250-949-7231**[www.hardyrealty.ca](http://www.hardyrealty.ca)**1112 Maquinna Ave**

Great Oceanviews from this 4 bdrm, 2 bath home

Sale includes all major appliances, Jacuzzi and hot tub. Fully fenced with 2 outbuildings for added storage. Full wet bar and woodstove. Excelant Value!

**\$210,000****Phone: 250-949-7231**[www.hardyrealty.ca](http://www.hardyrealty.ca)

**76 McKay Cres**  
**MLS#303245**  
**3 Bed / 2 Bath - 1800Sq. Ft**

This is a gorgeous end unit next to the trees with a view of the inlet!  
 Completely updated and move in ready!

**\$149,900**  
**Phone: 250-949-7231** [www.hardyrealty.ca](http://www.hardyrealty.ca)

**94 McKay Cres.**  
**MLS #291580 - Townhouse**

3 Bed / 1 1/2 Bath - 1680 sq. ft.  
 A beautifully updated tri-level end unit with a very nice fenced garden and even a glimpse of the inlet. Extra large deck of living room gives you another space to sun or entertain. Entire lower floor hobby / study area. View it soon!

**\$159,000**  
**Phone @ 250-949-7231** [www.hardyrealty.ca](http://www.hardyrealty.ca)

**#22 - Dogwood Lane**  
**3 bdrm, 2 bath townhouse / Oceanviews**  
 Lovely decorator colors & many upgrades included Vinyl Windows. All appliances included in sale  
 Low strata fees and loads of space!

**\$109,900**  
**Phone: 250-949-7231** [www.hardyrealty.ca](http://www.hardyrealty.ca)

**96 Mckay Cres.**  
**2 or 3 Bed / 1 Bath - 1800 sq. ft.**  
 You won't believe how private this unit is! Outdoor enjoyment comes from two patios and one balcony. Lots of good water views. Updated kitchen and newer thermal windows throughout. You must see it!

**\$145,000**  
**Phone @ 250-949-7231** [www.hardyrealty.ca](http://www.hardyrealty.ca)

**102 - 801 Marine Dr**  
**MLS# 296735 - Condo**  
**3 Bed / 1 Bath - 951 Sq. Ft**  
 Just park your car & walk into your ground level suite. Your cabin to relax in, minutes walk to inlet.

**\$89,000**  
**Phone: 250-949-7231** [www.hardyrealty.ca](http://www.hardyrealty.ca)

**965 Haida**  
**MLS# 311188**  
**4 Bed / 2 Bath - 2548 Sq. Ft**  
 This is a very nicely updated family home - newer roof, hardwood, tile & carpet.

**\$194,900**  
**Phone: 250-949-7231** [www.hardyrealty.ca](http://www.hardyrealty.ca)

**1181 Maquinna Terrace**  
**MLS# 312476**  
**4 Bed / 3 Bath - 2440 Sq. Ft**  
 Awesome Kitchen! Pool Table included - view from patio & sundeck - must be seen!  
**\$274,900**  
**Phone: 250-949-7231** [www.hardyrealty.ca](http://www.hardyrealty.ca)



**Apartments for Rent in Port Hardy**

Renting right on the waterfront in Port Hardy.

Two bedroom suites from \$795.00 per month and 3bedroom townhouses from \$895.00 per month.  
 All units are completely renovated. All new kitchens with dishwashers, all new bathroom fixtures.

Too many features to mention.

Units are also for sale, starting at \$99,000.00

Call Susan at 250 902-0540 to view.



## Village of Port Alice

# EMERGENCY PREPAREDNESS

## Word Search Puzzle

Are you looking for a fun way to become more informed about Emergency Preparedness? Why not use this Word Search as a way for your family to become better informed and prepared.

All correctly completed crossword & word search puzzles will be entered into a draw for one of two available FREE 72-HOUR SURVIVAL KITS. Complete and return your crossword puzzle to the Village Office by Wednesday, May 25th at 5pm in order to be entered into the draw.

*Limit of one entry per household member. Limit of one winner per household.*

### Find These Words

Batteries

Blankets

Candles

Can Opener

Cans

Cell Phone

Clothes

Extinguisher

Eyeglasses

First Aid Kit

Flash Light

Games

Matches

Medicine

Pet Food

Radio

T	S	E	I	R	E	T	T	A	B	S	E
I	C	L	O	T	H	E	S	D	E	X	S
K	E	O	D	G	P	W	O	S	T	E	W
D	L	I	B	M	A	O	S	I	H	H	G
I	L	D	P	T	F	A	N	C	I	A	E
A	P	A	E	T	L	G	T	S	M	X	N
T	H	R	E	G	U	A	T	E	U	G	I
S	O	P	E	I	M	L	S	N	A	C	C
R	N	Y	S	T	E	K	N	A	L	B	I
I	E	H	C	A	N	D	L	E	S	A	D
F	E	R	E	N	E	P	O	N	A	C	E
R	F	L	A	S	H	L	I	G	H	T	M

Name: \_\_\_\_\_

Phone: \_\_\_\_\_